

For Research Use Only

MMP28 Polyclonal antibody, PBS Only

Catalog Number: 18237-1-PBS

Featured Product



Basic Information

Catalog Number:

18237-1-PBS

Size:

100ug, Concentration: 1 mg/ml by Nanodrop;

Source:

Rabbit

Isotype:

IgG

Immunogen Catalog Number:

AG12980

GenBank Accession Number:

BC002631

GeneID (NCBI):

79148

UNIPROT ID:

Q9H239

Full Name:

matrix metalloproteinase 28

Calculated MW:

59 kDa

Observed MW:

48 kDa

Purification Method:

Antigen affinity purification

Applications

Tested Applications:

WB, IHC, IF/ICC, Indirect ELISA

Species Specificity:

human, mouse, rat

Background Information

MMP28(Epilysin) can degrade casein and play a role in tissues homeostasis and repair. The only specific human cell type recognized to express epilysin is the basal keratinocyte in the skin, where epilysin expression is upregulated during wound repair (PMID:16940349). Western blot showed this antibody recognize bands at 62 and 58 kDa as well as breakdown products at 50, 48, and 46 kDa (PMID:15953044). This antibody is specific to MMP28.

Storage

Storage:

Store at -80°C.

Storage Buffer:

PBS Only

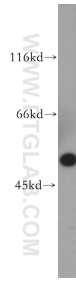
For technical support and original validation data for this product please contact:

T: 1 (888) 4PTGLAB (1-888-478-4522) (toll free in USA), or 1(312) 455-8498 (outside USA)

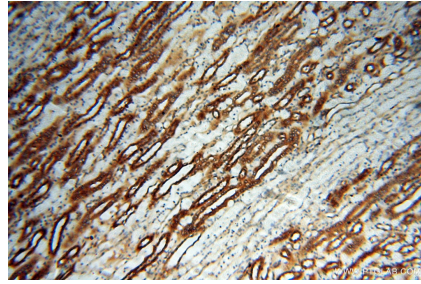
E: proteintech@ptglab.com
W: ptglab.com

This product is exclusively available under Proteintech Group brand and is not available to purchase from any other manufacturer.

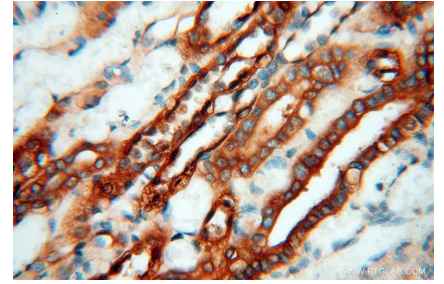
Selected Validation Data



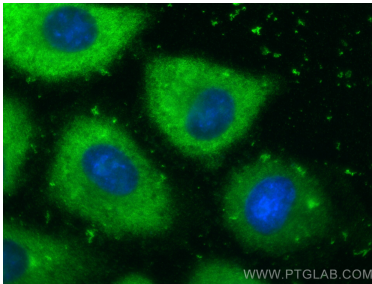
A549 cells were subjected to SDS PAGE followed by western blot with 18237-1-AP (MMP28 antibody) at dilution of 1:500 incubated at room temperature for 1.5 hours. This data was developed using the same antibody clone with 18237-1-PBS in a different storage buffer formulation.



Immunohistochemical analysis of paraffin-embedded human kidney using 18237-1-AP (MMP28 antibody) at dilution of 1:100 (under 10x lens). This data was developed using the same antibody clone with 18237-1-PBS in a different storage buffer formulation.



Immunohistochemical analysis of paraffin-embedded human kidney using 18237-1-AP (MMP28 antibody) at dilution of 1:100 (under 40x lens). This data was developed using the same antibody clone with 18237-1-PBS in a different storage buffer formulation.



Immunofluorescent analysis of (-20°C Methanol) fixed A549 cells using MMP28 antibody (18237-1-AP) at dilution of 1:200 and CoraLite®488-Conjugated Goat Anti-Rabbit IgG(H+L) (SA00013-2). This data was developed using the same antibody clone with 18237-1-PBS in a different storage buffer formulation.