

For Research Use Only

CHST3 Polyclonal antibody

Catalog Number: 18242-1-AP

7 Publications



Basic Information

Catalog Number:

18242-1-AP

Size:

150ul, Concentration: 400 ug/ml by Nanodrop and 213 ug/ml by Bradford method using BSA as the standard;

Source:

Rabbit

Isotype:

IgG

Immunogen Catalog Number:

AG13008

GenBank Accession Number:

BC093690

GeneID (NCBI):

9469

UNIPROT ID:

Q7LGC8

Full Name:

carbohydrate (chondroitin 6) sulfotransferase 3

Calculated MW:

479 aa, 55 kDa

Observed MW:

55-67 kDa

Purification Method:

Antigen affinity purification

Recommended Dilutions:

WB 1:500-1:1000

IHC 1:20-1:200

Applications

Tested Applications:

WB, IHC, ELISA

Cited Applications:

WB, IF, IHC

Species Specificity:

human, mouse, rat

Cited Species:

human, mouse, rat

Positive Controls:

WB : mouse heart tissue,

IHC : human breast cancer tissue, mouse brain tissue

Note-IHC: suggested antigen retrieval with TE buffer pH 9.0; (*) Alternatively, antigen retrieval may be performed with citrate buffer pH 6.0

Notable Publications

Author	Pubmed ID	Journal	Application
Laura Hobohm	35279766	Cell Mol Life Sci	WB
Jing Han	28274888	Osteoarthritis Cartilage	IHC
David Baidoe-Ansah	35805117	Cells	IF

Storage

Storage:

Store at -20°C. Stable for one year after shipment.

Storage Buffer:

PBS with 0.02% sodium azide and 50% glycerol pH 7.3.

Aliquoting is unnecessary for -20°C storage

*** 20ul sizes contain 0.1% BSA

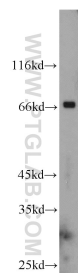
For technical support and original validation data for this product please contact:

T: 1 (888) 4PTGLAB (1-888-478-4522) (toll free in USA), or 1(312) 455-8498 (outside USA)

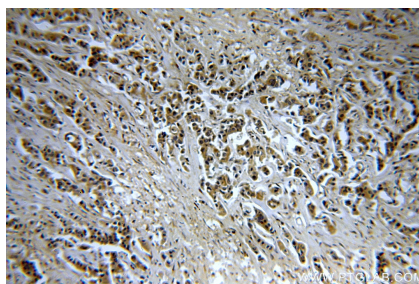
E: proteintech@ptglab.com
W: ptglab.com

This product is exclusively available under Proteintech Group brand and is not available to purchase from any other manufacturer.

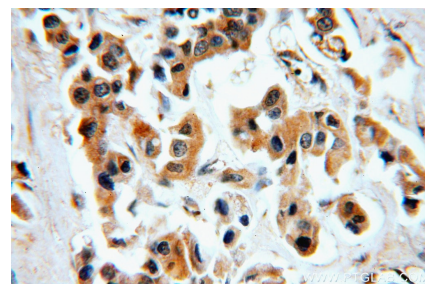
Selected Validation Data



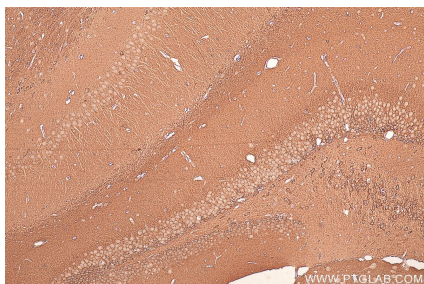
mouse heart tissue were subjected to SDS PAGE followed by western blot with 18242-1-AP (CHST3 antibody) at dilution of 1:800 incubated at room temperature for 1.5 hours.



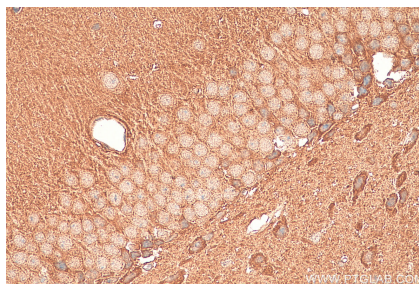
Immunohistochemical analysis of paraffin-embedded human breast cancer using 18242-1-AP (CHST3 antibody) at dilution of 1:50 (under 10x lens).



Immunohistochemical analysis of paraffin-embedded human breast cancer using 18242-1-AP (CHST3 antibody) at dilution of 1:50 (under 40x lens).



Immunohistochemical analysis of paraffin-embedded mouse brain tissue slide using 18242-1-AP (CHST3 antibody) at dilution of 1:200 (under 10x lens). Heat mediated antigen retrieval with Tris-EDTA buffer (pH 9.0).



Immunohistochemical analysis of paraffin-embedded mouse brain tissue slide using 18242-1-AP (CHST3 antibody) at dilution of 1:200 (under 40x lens). Heat mediated antigen retrieval with Tris-EDTA buffer (pH 9.0).