

For Research Use Only

CLEC5A Polyclonal antibody

Catalog Number: 18248-1-AP



Basic Information

Catalog Number:

18248-1-AP

Size:

150ul, Concentration: 150 ug/ml by Nanodrop and 153 ug/ml by Bradford method using BSA as the standard;

Source:

Rabbit

Isotype:

IgG

Immunogen Catalog Number:

AG13025

GenBank Accession Number:

BC112099

GeneID (NCBI):

23601

UNIPROT ID:

Q9NY25

Full Name:

C-type lectin domain family 5, member A

Calculated MW:

188 aa, 22 kDa

Observed MW:

36 kDa

Purification Method:

Antigen affinity purification

Recommended Dilutions:

WB 1:500-1:1000

Applications

Tested Applications:

WB, ELISA

Species Specificity:

human, mouse

Positive Controls:

WB : J774A.1 cells, K-562 cells, THP-1 cells, RAW 264.7 cells

Background Information

C-type lectin domain family 5 member A (CLEC5A, also known as CLECSF5 and MDL1) is a spleen tyrosine kinase (Syk)-coupled receptor abundantly expressed by monocytes, macrophages and neutrophils (PMID: 10449773). It has a pivotal function in activating multiple aspects of innate immunity against bacterial invasion (PMID: 28824166). Both in vitro and in vivo evidence supported that CLEC5A was involved in glioblastoma pathogenesis via regulation of PI3K/Akt pathway (PMID: 30834619). It appeared as a protein band of ~36 kDa because of glycosylation, while its predicted molecular weight is 22 kDa (PMID: 25877931; 19074552).

Storage

Storage:

Store at -20°C. Stable for one year after shipment.

Storage Buffer:

PBS with 0.02% sodium azide and 50% glycerol pH 7.3.

Aliquoting is unnecessary for -20°C storage

*** 20ul sizes contain 0.1% BSA

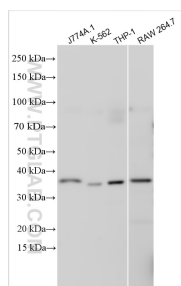
For technical support and original validation data for this product please contact:

T: 1 (888) 4PTGLAB (1-888-478-4522) (toll free in USA), or 1(312) 455-8498 (outside USA)

E: proteintech@ptglab.com
W: ptglab.com

This product is exclusively available under Proteintech Group brand and is not available to purchase from any other manufacturer.

Selected Validation Data



Various lysates were subjected to SDS PAGE followed by western blot with 18248-1-AP (CLEC5A antibody) at dilution of 1:500 incubated at room temperature for 1.5 hours.