

For Research Use Only

CLEC5A Polyclonal antibody, PBS Only

Catalog Number: 18248-1-PBS



Basic Information

Catalog Number: 18248-1-PBS	GenBank Accession Number: BC112099	Purification Method: Antigen affinity purification
Size: 100ug, Concentration: 1 mg/ml by Nanodrop;	GeneID (NCBI): 23601	
Source: Rabbit	UNIPROT ID: Q9NY25	
Isotype: IgG	Full Name: C-type lectin domain family 5, member A	
Immunogen Catalog Number: AG13025	Calculated MW: 188 aa, 22 kDa	
	Observed MW: 36 kDa	

Applications

Tested Applications:
WB, Indirect ELISA

Species Specificity:
human, mouse

Background Information

C-type lectin domain family 5 member A (CLEC5A, also known as CLECSF5 and MDL1) is a spleen tyrosine kinase (Syk)-coupled receptor abundantly expressed by monocytes, macrophages and neutrophils (PMID: 10449773). It has a pivotal function in activating multiple aspects of innate immunity against bacterial invasion (PMID: 28824166). Both in vitro and in vivo evidence supported that CLEC5A was involved in glioblastoma pathogenesis via regulation of PI3K/Akt pathway (PMID: 30834619). It appeared as a protein band of ~36 kDa because of glycosylation, while its predicted molecular weight is 22 kDa (PMID: 25877931; 19074552).

Storage

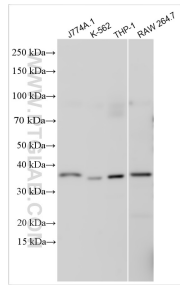
Storage:
Store at -80°C.

Storage Buffer:
PBS Only

For technical support and original validation data for this product please contact:
T: 1 (888) 4PTGLAB (1-888-478-4522) (toll free in USA), or 1(312) 455-8498 (outside USA) E: proteintech@ptglab.com W: ptglab.com

This product is exclusively available under Proteintech Group brand and is not available to purchase from any other manufacturer.

Selected Validation Data



Various lysates were subjected to SDS PAGE followed by western blot with 18248-1-AP (CLEC5A antibody) at dilution of 1:500 incubated at room temperature for 1.5 hours. This data was developed using the same antibody clone with 18248-1-PBS in a different storage buffer formulation.