

For Research Use Only

# Pinin Polyclonal antibody

Catalog Number: 18266-1-AP

Featured Product

7 Publications



## Basic Information

### Catalog Number:

18266-1-AP

### Size:

150ul, Concentration: 500 ug/ml by Nanodrop and 260 ug/ml by Bradford method using BSA as the standard;

### Source:

Rabbit

### Isotype:

IgG

### Immunogen Catalog Number:

AG6643

### GenBank Accession Number:

BC062602

### GeneID (NCBI):

5411

### UNIPROT ID:

Q9H307

### Full Name:

pinin, desmosome associated protein

### Calculated MW:

82 kDa

### Observed MW:

82 kDa, 140 kDa

### Purification Method:

Antigen affinity purification

### Recommended Dilutions:

WB 1:500-1:2000

IP 0.5-4.0 ug for 1.0-3.0 mg of total protein lysate

IF/ICC 1:300-1:1200

## Applications

### Tested Applications:

WB, IF/ICC, IP, ELISA

### Cited Applications:

WB, IHC, IF, IP, RIP

### Species Specificity:

human

### Cited Species:

human, mouse

### Positive Controls:

WB : HeLa cells, HepG2 cells

IP : HeLa cells,

IF/ICC : HeLa cells,

## Background Information

PNN, also named as DRS or 140 kDa nuclear and cell adhesion-related phosphoprotein, is a 717 amino acid protein, which belongs to the pinin family. PNN localizes in the plasma membrane and is expressed in placenta, lung, liver, kidney, pancreas, spleen, thymus, prostate, testis, ovary, small intestine, colon, heart, epidermis, esophagus, brain and smooth and skeletal muscle. PNN is expressed strongly in melanoma metastasis lesions and advanced primary tumors. PNN as a transcriptional activator binds to the E-box 1 core sequence of the E-cadherin promoter gene. PNN is involved in the establishment and maintenance of epithelia cell-cell adhesion. PNN is a potential tumor suppressor for renal cell carcinoma. The calculated molecular weight of PNN is 82 kDa (native form), but the post-modified protein is 140 kDa (phospho form of isoform 1).

## Notable Publications

Author	Pubmed ID	Journal	Application
Xuejun Yang	27175589	Oncotarget	WB
Ting Tang	32364663	Mol Oncol	WB,IP,IF
Liyuan Zhang	27384878	Oncotarget	WB

## Storage

### Storage:

Store at -20°C. Stable for one year after shipment.

### Storage Buffer:

PBS with 0.02% sodium azide and 50% glycerol pH 7.3.

Aliquoting is unnecessary for -20°C storage

\*\*\* 20ul sizes contain 0.1% BSA

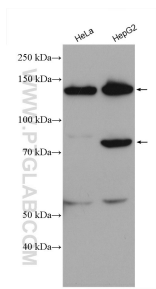
For technical support and original validation data for this product please contact:

T: 1 (888) 4PTGLAB (1-888-478-4522) (toll free in USA), or 1(312) 455-8498 (outside USA)

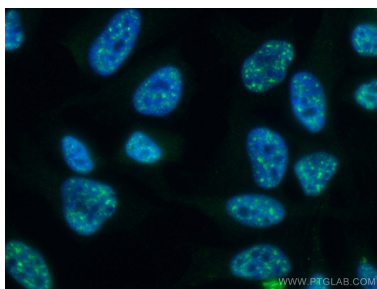
E: [proteintech@ptglab.com](mailto:proteintech@ptglab.com)  
W: [ptglab.com](http://ptglab.com)

This product is exclusively available under Proteintech Group brand and is not available to purchase from any other manufacturer.

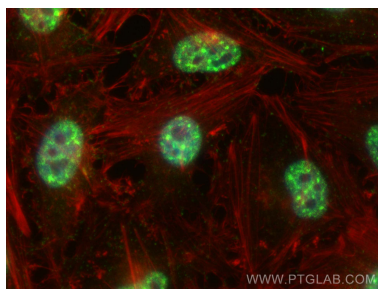
Selected Validation Data



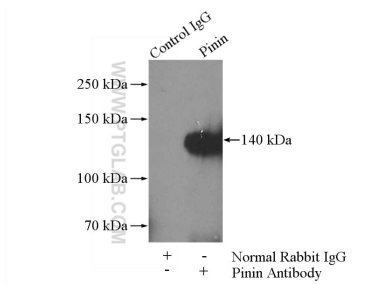
Various lysates were subjected to SDS PAGE followed by western blot with 18266-1-AP (Pinin antibody) at dilution of 1:1000 incubated at room temperature for 1.5 hours.



Immunofluorescent analysis of (4% PFA) fixed HeLa cells using Pinin antibody (18266-1-AP) at dilution of 1:200 and CoraLite®488-Conjugated AffiniPure Goat Anti-Rabbit IgG(H+L).



Immunofluorescent analysis of (4% PFA) fixed HeLa cells using Pinin antibody (18266-1-AP) at dilution of 1:600 and Multi-rAb CoraLite® Plus 488-Goat Anti-Rabbit Recombinant Secondary Antibody (H+L) (RGAR002), CL594-phalloidin (red).



IP result of anti-Pinin (IP:18266-1-AP, 4ug; Detection:18266-1-AP 1:300) with HeLa cells lysate 520ug.