

For Research Use Only

# LMX1B Polyclonal antibody

Catalog Number: 18278-1-AP

Featured Product

7 Publications



## Basic Information

### Catalog Number:

18278-1-AP

### Size:

150ul, Concentration: 800 ug/ml by Nanodrop;

### Source:

Rabbit

### Isotype:

IgG

### Immunogen Catalog Number:

AG13096

### GenBank Accession Number:

BC112120

### GeneID (NCBI):

4010

### UNIPROT ID:

O60663

### Full Name:

LIM homeobox transcription factor 1, beta

### Calculated MW:

372 aa, 42 kDa

### Observed MW:

42-45 kDa

### Purification Method:

Antigen affinity purification

### Recommended Dilutions:

WB 1:1000-1:6000

IF 1:20-1:200

## Applications

### Tested Applications:

WB, IF, ELISA

### Cited Applications:

WB, IP, IF, IHC, ChIP

### Species Specificity:

human, mouse, rat

### Cited Species:

human, rat, mouse

### Positive Controls:

WB : HeLa cells,

IF : embryonic kidney tissue,

## Background Information

LMX1B, LIM homeodomain factor 1b, functions as a transcription factor, and is essential for the normal development of dorsal limb structures, the glomerular basement membrane, the anterior segment of the eye, and dopaminergic and serotonergic neurons. Lmx1b is a continuously expressed, terminal selector-type factor in 5-HT neurons. It is required for maintenance of central serotonergic neurons (PMID: 17151281, PMID: 14602809). It is expressed in brain, testis, skeletal muscle, and pancreatic islets (PMID: 35417751, PMID: 18512225).

## Notable Publications

Author	Pubmed ID	Journal	Application
Zi-Yang Zhang	32606037	Sci Signal	IHC
Chunbao Zang	31545286	Biomed Pharmacother	WB
Petros Stathakos	32286126	Autophagy	

## Storage

### Storage:

Store at -20°C. Stable for one year after shipment.

### Storage Buffer:

PBS with 0.02% sodium azide and 50% glycerol pH 7.3.

Aliquoting is unnecessary for -20°C storage

\*\*\* 20ul sizes contain 0.1% BSA

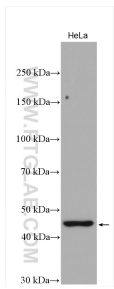
For technical support and original validation data for this product please contact:

T: 1 (888) 4PTGLAB (1-888-478-4522) (toll free in USA), or 1(312) 455-8498 (outside USA)

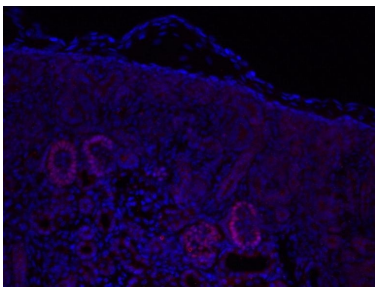
E: [proteintech@ptglab.com](mailto:proteintech@ptglab.com)  
W: [ptglab.com](http://ptglab.com)

This product is exclusively available under Proteintech Group brand and is not available to purchase from any other manufacturer.

## Selected Validation Data



HeLa cells were subjected to SDS PAGE followed by western blot with 18278-1-AP (LMX1B antibody) at dilution of 1:3000 incubated at room temperature for 1.5 hours.



IF result of anti-LMX1B (18278-1-AP,1:900) with embryonic kidney by Dr. Joo-Seop Park. Red: Podocytes, anti-rabbit Alexa555; Blue: Hoechst.