

For Research Use Only

Mef2c-Specific Polyclonal antibody

Catalog Number: 18292-1-AP



Basic Information

Catalog Number:

18292-1-AP

Size:

150ul , Concentration: 1100 ug/ml by Nanodrop;

Source:

Rabbit

Isotype:

IgG

GenBank Accession Number:

BC037731

GeneID (NCBI):

17260

UNIPROT ID:

Q8CFN5

Full Name:

myocyte enhancer factor 2C

Calculated MW:

51 kDa

Observed MW:

50 kDa

Purification Method:

Antigen affinity purification

Recommended Dilutions:

WB 1:2000-1:16000

Applications

Tested Applications:

WB, ELISA

Species Specificity:

mouse

Positive Controls:

WB : 3T3-L1 cells, NIH/3T3 cells

Background Information

The immunogen used is peptide from the specific sequence of MEF2C transcript variant 5 match to transcript variant 1. The antibody can recognize the transcript variant 4 and transcript variant 5 of MEF2C.

Storage

Storage:

Store at -20°C. Stable for one year after shipment.

Storage Buffer:

PBS with 0.02% sodium azide and 50% glycerol pH 7.3.

Aliquoting is unnecessary for -20°C storage

*** 20ul sizes contain 0.1% BSA

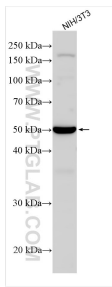
For technical support and original validation data for this product please contact:

T: 1 (888) 4PTGLAB (1-888-478-4522) (toll free in USA), or 1(312) 455-8498 (outside USA)

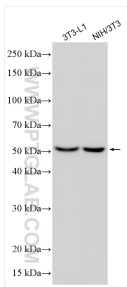
E: proteintech@ptglab.com
W: ptglab.com

This product is exclusively available under Proteintech Group brand and is not available to purchase from any other manufacturer.

Selected Validation Data



Various lysates were subjected to SDS PAGE followed by western blot with 18292-1-AP (Mef2c-Specific antibody) at dilution of 1:1000 incubated at room temperature for 1.5 hours.



Various lysates were subjected to SDS PAGE followed by western blot with 18292-1-AP (Mef2c-Specific antibody) at dilution of 1:8000 incubated at room temperature for 1.5 hours.