

For Research Use Only

# KRAS-2B-specific Polyclonal antibody



Catalog Number: 18294-1-AP

## Basic Information

<b>Catalog Number:</b> 18294-1-AP	<b>GenBank Accession Number:</b> BC013572	<b>Purification Method:</b> Antigen affinity purification
<b>Size:</b> 150ul , Concentration: 213 µg/ml by Bradford method using BSA as the standard;	<b>GeneID (NCBI):</b> 3845	<b>Recommended Dilutions:</b> IHC 1:20-1:200 IF 1:10-1:100
<b>Source:</b> Rabbit	<b>Full Name:</b> v-Ki-ras2 Kirsten rat sarcoma viral oncogene homolog	
<b>Isotype:</b> IgG	<b>Calculated MW:</b> 21 kDa	

## Applications

<b>Tested Applications:</b> IF, IHC, ELISA	<b>Positive Controls:</b>
<b>Species Specificity:</b> human, mouse, rat	<b>IHC :</b> human pancreas tissue, human stomach cancer tissue
<b>Note-IHC: suggested antigen retrieval with TE buffer pH 9.0; (*) Alternatively, antigen retrieval may be performed with citrate buffer pH 6.0</b>	<b>IF :</b> HepG2 cells,

## Background Information

KRAS, also called p21, is a member of the Ras superfamily of proteins. It is located on human chromosome 12, and contains four coding exons and a 5' non-coding exon (PMID: 12778136). KRAS is a membrane-anchored guanosine triphosphate/guanosine diphosphate (GTP/GDP)-binding protein and is widely expressed in most human cells. Like other members of the Ras family, the KRAS protein is a GTPase, and it is involved in intracellular signal transduction and mainly responsible for EGFR-signaling activation (PMID: 19117687). KRAS mutations have been found in various malignancies, including lung adenocarcinoma, mucinous adenoma, ductal carcinoma of the pancreas and colorectal carcinoma. KRAS has two isoforms, 2A and 2B. The antibody is specific to KRAS, can't recognize NRAS and HRAS.

## Storage

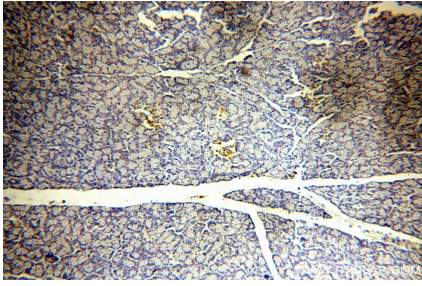
**Storage:**  
Store at -20°C. Stable for one year after shipment.  
**Storage Buffer:**  
PBS with 0.02% sodium azide and 50% glycerol pH 7.3.  
Aliquoting is unnecessary for -20°C storage

\*\*\* 20ul sizes contain 0.1% BSA

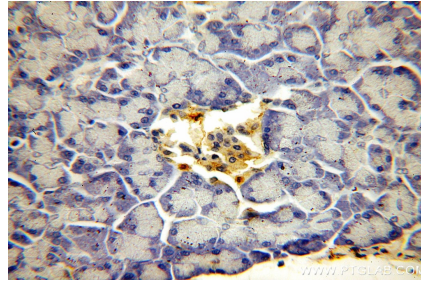
For technical support and original validation data for this product please contact:  
T: 1 (888) 4PTGLAB (1-888-478-4522) (toll free in USA), or 1(312) 455-8498 (outside USA)  
E: proteintech@ptglab.com  
W: ptglab.com

This product is exclusively available under Proteintech Group brand and is not available to purchase from any other manufacturer.

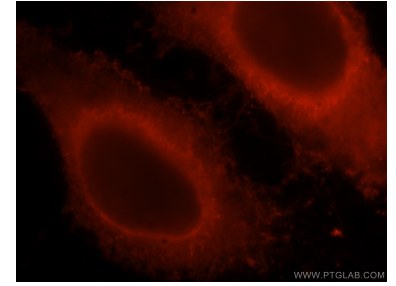
## Selected Validation Data



Immunohistochemical analysis of paraffin-embedded human pancreas using 18294-1-AP (KRAS-2B-specific antibody) at dilution of 1:50 (under 10x lens).



Immunohistochemical analysis of paraffin-embedded human pancreas using 18294-1-AP (KRAS-2B-specific antibody) at dilution of 1:50 (under 40x lens).



Immunofluorescent analysis of HepG2 cells, using KRAS antibody 18294-1-AP at 1:25 dilution and Rhodamine-labeled goat anti-rabbit IgG (red).