

ERO1LB Polyclonal antibody

Catalog Number: 18312-1-AP

Basic Information

Catalog Number: 18312-1-AP	GenBank Accession Number: BC032823	Purification Method: Antigen affinity purification
Size: 150ul , Concentration: 800 µg/ml by Nanodrop and 447 µg/ml by Bradford method using BSA as the standard;	GeneID (NCBI): 56605	Recommended Dilutions: WB 1:500-1:3000 IHC 1:20-1:200
Source: Rabbit	Full Name: ERO1-like beta (S. cerevisiae)	
Isotype: IgG	Calculated MW: 54 kDa	
	Observed MW: 54 kDa	

Applications

Tested Applications: IHC, WB, ELISA	Positive Controls:
Species Specificity: human, mouse, rat	WB : human brain tissue, mouse brain tissue, rat brain tissue
Note-IHC: suggested antigen retrieval with TE buffer pH 9.0; (*) Alternatively, antigen retrieval may be performed with citrate buffer pH 6.0	IHC : human pancreas tissue,

Background Information

ERO1LB is an essential oxidoreductase that oxidizes proteins in the endoplasmic reticulum to produce disulfide bonds. It acts by oxidizing directly P4HB/PDI isomerase through a direct disulfide exchange. It does not act as a direct oxidant of folding substrate, but relies on P4HB/PDI to transfer oxidizing equivalent. Associates with ERP44 but not with GRP54, demonstrating that it does not oxidize all PDI related proteins and can discriminate between PDI and related proteins. Its reoxidation probably involves electron transfer to molecular oxygen via FAD. Glutathione may be required to regulate its activity in the endoplasmic reticulum. It may be responsible for a significant proportion of reactive oxygen species (ROS) in the being a source of oxidative stress. It is required for the folding of cell, thereby being a source of oxidative stress. This antibody has no cross reaction to ERO1L.

Storage

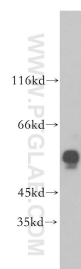
Storage:
Store at -20°C. Stable for one year after shipment.
Storage Buffer:
PBS with 0.02% sodium azide and 50% glycerol pH 7.3.
Aliquoting is unnecessary for -20°C storage

*** 20ul sizes contain 0.1% BSA

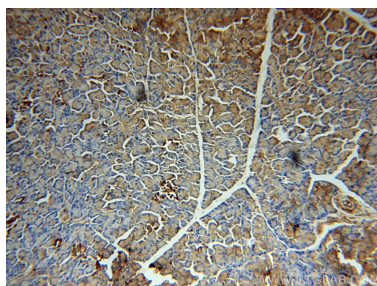
For technical support and original validation data for this product please contact:
T: 1 (888) 4PTGLAB (1-888-478-4522) (toll free in USA), or 1(312) 455-8498 (outside USA)
E: proteintech@ptglab.com
W: ptglab.com

This product is exclusively available under Proteintech Group brand and is not available to purchase from any other manufacturer.

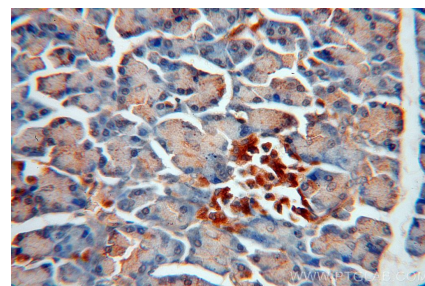
Selected Validation Data



human brain tissue were subjected to SDS PAGE followed by western blot with 18312-1-AP (ERO 1LB antibody) at dilution of 1:300 incubated at room temperature for 1.5 hours.



Immunohistochemical analysis of paraffin-embedded human pancreas using 18312-1-AP (ERO 1LB antibody) at dilution of 1:100 (under 10x lens).



Immunohistochemical analysis of paraffin-embedded human pancreas using 18312-1-AP (ERO 1LB antibody) at dilution of 1:100 (under 40x lens).