

For Research Use Only

# ERO1LB Polyclonal antibody, PBS Only

Catalog Number:18312-1-PBS



## Basic Information

<b>Catalog Number:</b> 18312-1-PBS	<b>GenBank Accession Number:</b> BC032823	<b>Purification Method:</b> Antigen affinity purification
<b>Size:</b> 100ug , Concentration: 1 mg/ml by Nanodrop;	<b>GeneID (NCBI):</b> 56605	
<b>Source:</b> Rabbit	<b>UNIPROT ID:</b> Q86YB8	
<b>Isotype:</b> IgG	<b>Full Name:</b> ERO1-like beta ( <i>S. cerevisiae</i> )	
	<b>Calculated MW:</b> 54 kDa	
	<b>Observed MW:</b> 54 kDa	

## Applications

**Tested Applications:**  
WB, IHC, Indirect ELISA

**Species Specificity:**  
human, mouse, rat

## Background Information

ERO1LB is an essential oxidoreductase that oxidizes proteins in the endoplasmic reticulum to produce disulfide bonds. It acts by oxidizing directly P4HB/PDI isomerase through a direct disulfide exchange. It does not act as a direct oxidant of folding substrate, but relies on P4HB/PDI to transfer oxidizing equivalent. Associates with ERP44 but not with GRP54, demonstrating that it does not oxidize all PDI related proteins and can discriminate between PDI and related proteins. Its reoxidation probably involves electron transfer to molecular oxygen via FAD. Glutathione may be required to regulate its activity in the endoplasmic reticulum. It may be responsible for a significant proportion of reactive oxygen species (ROS) in the being a source of oxidative stress. It is required for the folding of cell, thereby being a source of oxidative stress. This antibody has no cross reaction to ERO1L.

## Storage

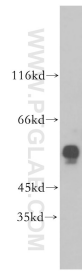
**Storage:**  
Store at -80°C.

**Storage Buffer:**  
PBS Only

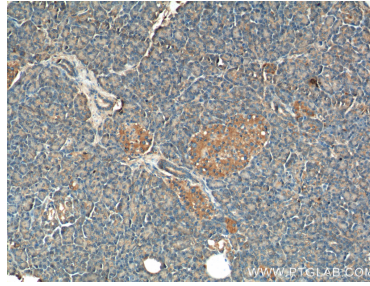
For technical support and original validation data for this product please contact:  
T: 1 (888) 4PTGLAB (1-888-478-4522) (toll free in USA), or 1(312) 455-8498 (outside USA)      E: [proteintech@ptglab.com](mailto:proteintech@ptglab.com)      W: [ptglab.com](http://ptglab.com)

**This product is exclusively available under Proteintech Group brand and is not available to purchase from any other manufacturer.**

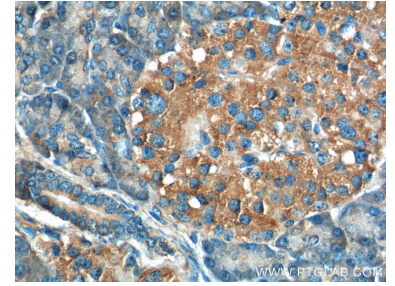
## Selected Validation Data



human brain tissue were subjected to SDS PAGE followed by western blot with 18312-1-AP (ERO1LB antibody) at dilution of 1:300 incubated at room temperature for 1.5 hours. This data was developed using the same antibody clone with 18312-1-PBS in a different storage buffer formulation.



Immunohistochemical analysis of paraffin-embedded human pancreas tissue slide using 18312-1-AP (ERO1LB Antibody) at dilution of 1:200 (under 10x lens). This data was developed using the same antibody clone with 18312-1-PBS in a different storage buffer formulation.



Immunohistochemical analysis of paraffin-embedded human pancreas tissue slide using 18312-1-AP (ERO1LB Antibody) at dilution of 1:200 (under 40x lens). This data was developed using the same antibody clone with 18312-1-PBS in a different storage buffer formulation.