

For Research Use Only

NHE8 Polyclonal antibody

Catalog Number: 18318-1-AP

Featured Product



Basic Information

Catalog Number: 18318-1-AP	GenBank Accession Number: BC112213	Purification Method: Antigen affinity purification
Size: 150ul , Concentration: 400 µg/ml by Nanodrop and 267 µg/ml by Bradford method using BSA as the standard;	GeneID (NCBI): 23315	Recommended Dilutions: WB 1:500-1:2000 IHC 1:50-1:500 IF 1:20-1:200
Source: Rabbit	Full Name: solute carrier family 9 (sodium/hydrogen exchanger), member 8	
Isotype: IgG	Calculated MW: 581 aa, 65 kDa	
Immunogen Catalog Number: AG13111	Observed MW: 70-85 kDa	

Applications

Tested Applications:

IF, IHC, WB, ELISA

Species Specificity:

human, mouse, rat

Note-IHC: suggested antigen retrieval with TE buffer pH 9.0; (*) Alternatively, antigen retrieval may be performed with citrate buffer pH 6.0

Positive Controls:

WB : HEK-293 cells, mouse testis tissue, mouse colon tissue, mouse liver tissue, mouse kidney tissue

IHC : human kidney tissue, human colon tissue, human lung tissue, human ovary tissue, human placenta tissue, human skin tissue, human testis tissue, mouse testis tissue

IF : HEK-293 cells,

Background Information

NHE8, encoded by SLC9A8, is a member of sodium/hydrogen exchanger family which are transmembrane proteins that mediate the electroneutral exchange of sodium (Na) for hydrogen (H) and get involved in intracellular pH homeostasis, cell volume regulation, acid-base regulation, and so on. NHE8 has a broad tissue distribution, with relatively high abundance in the gastrointestinal tract. It has been reported that NHE8 expression differs among different regions in the stomach, very low in nonglandular region whereas very high in glandular region. The predicted molecular weight of NHE8 is 64-65 kDa, while its glycosylated form often migrates around 70-85 kDa.

Storage

Storage:

Store at -20°C. Stable for one year after shipment.

Storage Buffer:

PBS with 0.02% sodium azide and 50% glycerol pH 7.3.

Aliquoting is unnecessary for -20°C storage

*** 20ul sizes contain 0.1% BSA

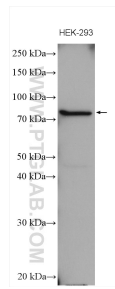
For technical support and original validation data for this product please contact:

T: 1 (888) 4PTGLAB (1-888-478-4522) (toll free in USA), or 1(312) 455-8498 (outside USA)

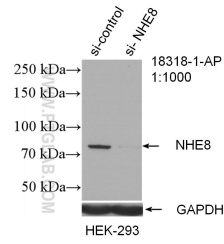
E: proteintech@ptglab.com
W: ptglab.com

This product is exclusively available under Proteintech Group brand and is not available to purchase from any other manufacturer.

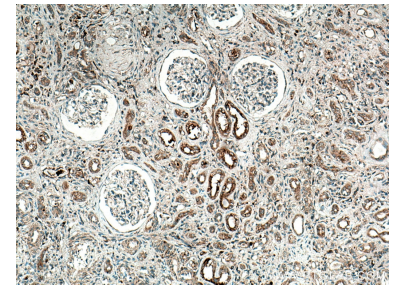
Selected Validation Data



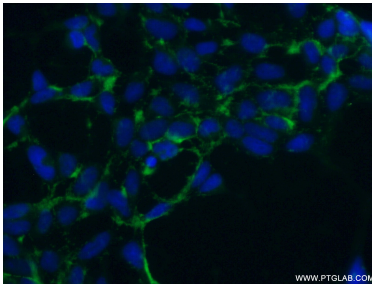
HEK-293 cells were subjected to SDS PAGE followed by western blot with 18318-1-AP (NHE8 antibody) at dilution of 1:1000 incubated at room temperature for 1.5 hours.



WB result of NHE8 antibody (18318-1-AP; 1:1000; incubated at room temperature for 1.5 hours) with sh-Control and sh-NHE8 transfected HEK-293 cells.



Immunohistochemical analysis of paraffin-embedded human kidney tissue slide using 18318-1-AP (NHE8 antibody) at dilution of 1:200 (under 10x lens). Heat mediated antigen retrieval with Tris-EDTA buffer (pH 9.0).



Immunofluorescent analysis of (-20°C Ethanol) fixed HEK-293 cells using 18318-1-AP (NHE8 antibody) at dilution of 1:50 and Alexa Fluor 488-conjugated AffiniPure Goat Anti-Rabbit IgG(H+L).