

For Research Use Only

TBC1D22A Polyclonal antibody

Catalog Number: 18332-1-AP

1 Publications



Basic Information

Catalog Number:

18332-1-AP

Size:

150ul, Concentration: 400 ug/ml by Nanodrop and 273 ug/ml by Bradford method using BSA as the standard;

Source:

Rabbit

Isotype:

IgG

Immunogen Catalog Number:

AG12942

GenBank Accession Number:

BC001292

GeneID (NCBI):

25771

UNIPROT ID:

Q8WUA7

Full Name:

TBC1 domain family, member 22A

Calculated MW:

59 kDa

Observed MW:

59 kDa

Purification Method:

Antigen affinity purification

Recommended Dilutions:

WB 1:500-1:3000

IHC 1:20-1:200

IF/ICC 1:20-1:200

Applications

Tested Applications:

WB, IHC, IF/ICC, ELISA

Cited Applications:

WB, IHC

Species Specificity:

human, mouse, rat

Cited Species:

human

Note-IHC: suggested antigen retrieval with TE buffer pH 9.0; (*) Alternatively, antigen retrieval may be performed with citrate buffer pH 6.0

Positive Controls:

WB : HeLa cells, COLO 320 cells

IHC : human cervical cancer tissue, human cervix tissue, human kidney tissue

IF/ICC : HeLa cells,

Notable Publications

Author	Pubmed ID	Journal	Application
Xiaofeng Lv	39439452	Int J Med Sci	WB,IHC

Storage

Storage:

Store at -20°C. Stable for one year after shipment.

Storage Buffer:

PBS with 0.02% sodium azide and 50% glycerol pH 7.3.

Aliquoting is unnecessary for -20°C storage

*** 20ul sizes contain 0.1% BSA

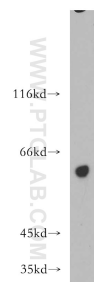
For technical support and original validation data for this product please contact:

T: 1 (888) 4PTGLAB (1-888-478-4522) (toll free in USA), or 1(312) 455-8498 (outside USA)

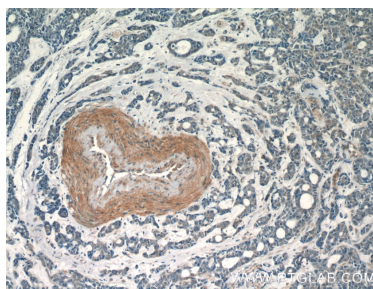
E: proteintech@ptglab.com
W: ptglab.com

This product is exclusively available under Proteintech Group brand and is not available to purchase from any other manufacturer.

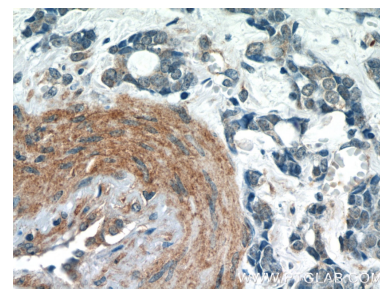
Selected Validation Data



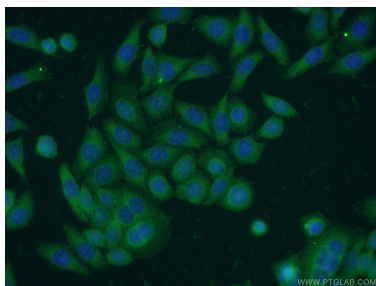
HeLa cells were subjected to SDS PAGE followed by western blot with 18332-1-AP (TBC1D22A antibody) at dilution of 1:500 incubated at room temperature for 1.5 hours.



Immunohistochemical analysis of paraffin-embedded human cervical cancer tissue slide using 18332-1-AP (TBC1D22A Antibody) at dilution of 1:50 (under 10x lens).



Immunohistochemical analysis of paraffin-embedded human cervical cancer tissue slide using 18332-1-AP (TBC1D22A Antibody) at dilution of 1:50 (under 40x lens).



Immunofluorescent analysis of HeLa cells using 18332-1-AP (TBC1D22A antibody) at dilution of 1:50 and Alexa Fluor 488-conjugated Goat Anti-Rabbit IgG(H+L).