

For Research Use Only

LSM14A Polyclonal antibody

Catalog Number: 18336-1-AP

4 Publications



Basic Information

Catalog Number: 18336-1-AP	GenBank Accession Number: BC016842	Purification Method: Antigen affinity purification
Size: 150ul , Concentration: 650 µg/ml by Nanodrop;	GeneID (NCBI): 26065	Recommended Dilutions: WB 1:500-1:2000 IHC 1:20-1:200 IF 1:20-1:200
Source: Rabbit	Full Name: LSM14A, SCD6 homolog A (S. cerevisiae)	
Isotype: IgG	Calculated MW: 463 aa, 51 kDa	
Immunogen Catalog Number: AG12997	Observed MW: 60 kDa	

Applications

Tested Applications: IF, IHC, WB, ELISA	Positive Controls:
Cited Applications: IF, WB	WB : A549 cells, HeLa cells, PC-3 cells, HEK-293T cells, HepG2 cells, Jurkat cells
Species Specificity: human	IHC : human testis tissue,
Cited Species: human, mouse	IF : HepG2 cells,
Note-IHC: suggested antigen retrieval with TE buffer pH 9.0; (*) Alternatively, antigen retrieval may be performed with citrate buffer pH 6.0	

Background Information

LSm14A was originally discovered to be a component of the P-bodies, it is a member of the LSm family of proteins, which have been shown to be involved in RNA processing events. The N terminus of LSm14A is a conserved LSm domain, whereas the C terminus contains two domains called "DFDF box" and "FDF_TFG box", respectively.

Notable Publications

Author	Pubmed ID	Journal	Application
Xiao-Man Liu	34766549	Elife	WB,IF
Vladimir Majerciak	37427791	Nucleic Acids Res	IF
Lina Wang	36950761	Adv Sci (Weinh)	IF

Storage

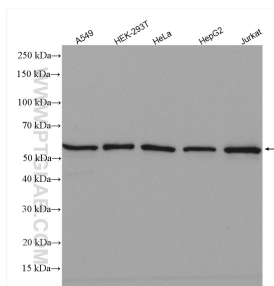
Storage:
Store at -20°C. Stable for one year after shipment.
Storage Buffer:
PBS with 0.02% sodium azide and 50% glycerol pH 7.3.
Aliquoting is unnecessary for -20°C storage

*** 20ul sizes contain 0.1% BSA

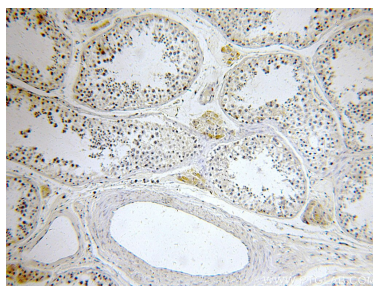
For technical support and original validation data for this product please contact:
T: 1 (888) 4PTGLAB (1-888-478-4522) (toll free in USA), or 1(312) 455-8498 (outside USA)
E: proteintech@ptglab.com
W: ptglab.com

This product is exclusively available under Proteintech Group brand and is not available to purchase from any other manufacturer.

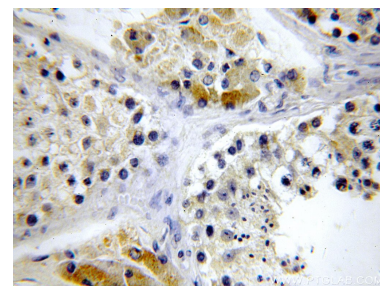
Selected Validation Data



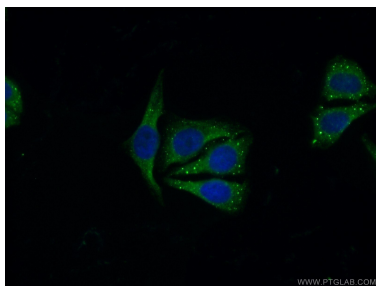
Various lysates were subjected to SDS PAGE followed by western blot with 18336-1-AP (LSM14A antibody) at dilution of 1:1000 incubated at room temperature for 1.5 hours.



Immunohistochemical analysis of paraffin-embedded human testis using 18336-1-AP (LSM14A antibody) at dilution of 1:100 (under 10x lens).



Immunohistochemical analysis of paraffin-embedded human testis using 18336-1-AP (LSM14A antibody) at dilution of 1:100 (under 40x lens).



Immunofluorescent analysis of (10% Formaldehyde) fixed HepG2 cells using 18336-1-AP (LSM14A antibody) at dilution of 1:50 and Alexa Fluor 488-conjugated AffiniPure Goat Anti-Rabbit IgG(H+L).