

For Research Use Only

MRPL15 Polyclonal antibody

Catalog Number: 18339-1-AP

3 Publications



Basic Information

Catalog Number:

18339-1-AP

Size:

150ul, Concentration: 600 ug/ml by Nanodrop;

Source:

Rabbit

Isotype:

IgG

Immunogen Catalog Number:

AG13087

GenBank Accession Number:

BC000891

GeneID (NCBI):

29088

UNIPROT ID:

Q9P015

Full Name:

mitochondrial ribosomal protein L15

Calculated MW:

33 kDa

Observed MW:

33-35 kDa

Purification Method:

Antigen affinity purification

Recommended Dilutions:

WB 1:2000-1:16000

Applications

Tested Applications:

WB, ELISA

Cited Applications:

WB

Species Specificity:

human, mouse, rat

Cited Species:

human, mouse

Positive Controls:

WB : HEK-293 cells, HeLa cells, HepG2 cells, MCF-7 cells

Notable Publications

Author	Pubmed ID	Journal	Application
Christopher Lowden	34525369	Cell Rep	WB
Ying Wang	34707288	Nature	WB
Olga Gourdomichali	35205152	Biology (Basel)	WB

Storage

Storage:

Store at -20°C. Stable for one year after shipment.

Storage Buffer:

PBS with 0.02% sodium azide and 50% glycerol pH 7.3.

Aliquoting is unnecessary for -20°C storage

*** 20ul sizes contain 0.1% BSA

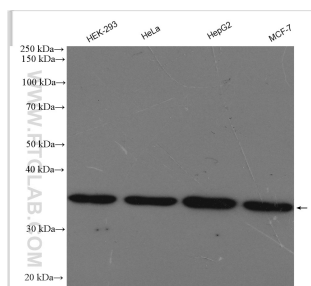
For technical support and original validation data for this product please contact:

T: 1 (888) 4PTGLAB (1-888-478-4522) (toll free in USA), or 1(312) 455-8498 (outside USA)

E: proteintech@ptglab.com
W: ptglab.com

This product is exclusively available under Proteintech Group brand and is not available to purchase from any other manufacturer.

Selected Validation Data



Various lysates were subjected to SDS PAGE followed by western blot with 18339-1-AP (MRPL15 antibody) at dilution of 1:8000 incubated at room temperature for 1.5 hours.