

For Research Use Only

SMAD6 Polyclonal antibody

Catalog Number: 18342-1-AP

1 Publications



Basic Information

Catalog Number:

18342-1-AP

Size:

150ul, Concentration: 650 µg/ml by Nanodrop;

Source:

Rabbit

Isotype:

IgG

Immunogen Catalog Number:

AG13128

GenBank Accession Number:

BC012986

GeneID (NCBI):

4091

UNIPROT ID:

O43541

Full Name:

SMAD family member 6

Calculated MW:

53 kDa

Observed MW:

52 kDa

Purification Method:

Antigen affinity purification

Recommended Dilutions:

WB 1:1000-1:6000

Applications

Tested Applications:

WB, ELISA

Cited Applications:

WB

Species Specificity:

human

Cited Species:

human

Positive Controls:

WB : HEK-293T cells,

Background Information

SMAD6 is an intracellular signal transduction protein that belongs to the SMAD protein family. It acts as a negative regulator in the transforming growth factor-beta (TGF-β) signaling pathway, binding to TGF-β receptors and inhibiting the phosphorylation of SMAD2/SMAD3, thereby blocking the transmission of TGF-β signals. Additionally, SMAD6 is involved in the regulation of the bone morphogenetic protein (BMP) signaling pathway, affecting cell proliferation, differentiation, and apoptosis. During development, SMAD6 is crucial for the formation of bones and cartilage. Its abnormal expression is associated with various diseases, including skeletal developmental abnormalities and certain types of cancer.

Notable Publications

Author	Pubmed ID	Journal	Application
Wei Lu	33174391	J Cell Mol Med	WB

Storage

Storage:

Store at -20°C. Stable for one year after shipment.

Storage Buffer:

PBS with 0.02% sodium azide and 50% glycerol, pH7.3

Aliquoting is unnecessary for -20°C storage

*** 20ul sizes contain 0.1% BSA

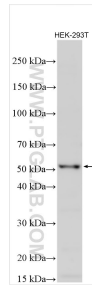
For technical support and original validation data for this product please contact:

T: 1 (888) 4PTGLAB (1-888-478-4522) (toll free in USA), or 1(312) 455-8498 (outside USA)

E: proteintech@ptglab.com
W: ptglab.com

This product is exclusively available under Proteintech Group brand and is not available to purchase from any other manufacturer.

Selected Validation Data



Various lysates were subjected to SDS PAGE followed by western blot with 18342-1-AP (SMAD6 antibody) at dilution of 1:3000 incubated at room temperature for 1.5 hours.