

For Research Use Only

SMAD6 Polyclonal antibody, PBS Only

Catalog Number:18342-1-PBS



Basic Information

Catalog Number:

18342-1-PBS

Size:

100ug, Concentration: 1 mg/ml by Nanodrop;

Source:

Rabbit

Isotype:

IgG

Immunogen Catalog Number:

AG13128

GenBank Accession Number:

BC012986

GeneID (NCBI):

4091

UNIPROT ID:

O43541

Full Name:

SMAD family member 6

Calculated MW:

53 kDa

Observed MW:

52 kDa

Purification Method:

Antigen affinity purification

Applications

Tested Applications:

WB, Indirect ELISA

Species Specificity:

human, mouse

Background Information

SMAD6 is an intracellular signal transduction protein that belongs to the SMAD protein family. It acts as a negative regulator in the transforming growth factor-beta (TGF- β) signaling pathway, binding to TGF- β receptors and inhibiting the phosphorylation of SMAD2/SMAD3, thereby blocking the transmission of TGF- β signals. Additionally, SMAD6 is involved in the regulation of the bone morphogenetic protein (BMP) signaling pathway, affecting cell proliferation, differentiation, and apoptosis. During development, SMAD6 is crucial for the formation of bones and cartilage. Its abnormal expression is associated with various diseases, including skeletal developmental abnormalities and certain types of cancer.

Storage

Storage:

Store at -80°C.

Storage Buffer:

PBS only, pH7.3

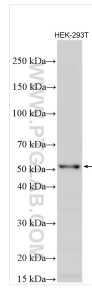
For technical support and original validation data for this product please contact:

T: 1 (888) 4PTGLAB (1-888-478-4522) (toll free in USA), or 1(312) 455-8498 (outside USA)

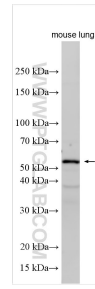
E: proteintech@ptglab.com
W: ptglab.com

This product is exclusively available under Proteintech Group brand and is not available to purchase from any other manufacturer.

Selected Validation Data



Various lysates were subjected to SDS PAGE followed by western blot with 18342-1-AP (SMAD6 antibody) at dilution of 1:3000 incubated at room temperature for 1.5 hours. This data was developed using the same antibody clone with 18342-1-PBS in a different storage buffer formulation.



Various lysates were subjected to SDS PAGE followed by western blot with 18342-1-AP (SMAD6 antibody) at dilution of 1:1500 incubated at room temperature for 1.5 hours. This data was developed using the same antibody clone with 18342-1-PBS in a different storage buffer formulation.