

For Research Use Only

MRPS23 Polyclonal antibody

Catalog Number: 18345-1-AP **1 Publications**



Basic Information

Catalog Number: 18345-1-AP	GenBank Accession Number: BC000242	Purification Method: Antigen affinity purification
Size: 150ul , Concentration: 600 µg/ml by Nanodrop and 327 µg/ml by Bradford method using BSA as the standard;	GeneID (NCBI): 51649	Recommended Dilutions: WB 1:1000-1:4000 IP 0.5-4.0 ug for IP and 1:200-1:1000 for WB
Source: Rabbit	Full Name: mitochondrial ribosomal protein S23	IHC 1:200-1:800 IF 1:50-1:500
Isotype: IgG	Calculated MW: 22 kDa	
Immunogen Catalog Number: AG13144	Observed MW: 23-25 kDa	

Applications

Tested Applications: IF, IHC, IP, WB, ELISA	Positive Controls: WB : HepG2 cells, MCF-7 cells IP : HeLa cells, IHC : human liver cancer tissue, IF : HeLa cells,
Cited Applications: WB	
Species Specificity: human, mouse, rat	
Cited Species: human	
Note-IHC: suggested antigen retrieval with TE buffer pH 9.0; (*) Alternatively, antigen retrieval may be performed with citrate buffer pH 6.0	

Background Information

Notable Publications

Author	Pubmed ID	Journal	Application
Yuyang Liu	37917749	Science	WB

Storage

Storage:
Store at -20°C. Stable for one year after shipment.
Storage Buffer:
PBS with 0.02% sodium azide and 50% glycerol pH 7.3.
Aliquoting is unnecessary for -20°C storage

*** 20ul sizes contain 0.1% BSA

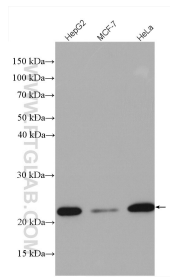
For technical support and original validation data for this product please contact:

T: 1 (888) 4PTGLAB (1-888-478-4522) (toll free in USA), or 1(312) 455-8498 (outside USA)

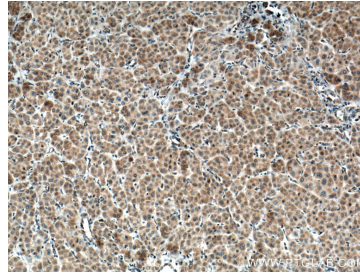
E: proteintech@ptglab.com
W: ptglab.com

This product is exclusively available under Proteintech Group brand and is not available to purchase from any other manufacturer.

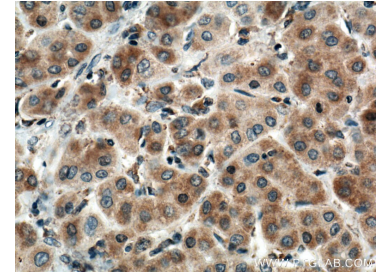
Selected Validation Data



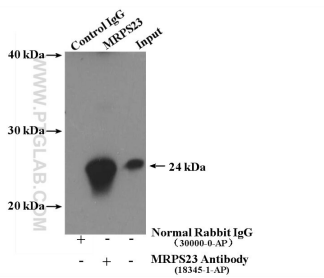
Various lysates were subjected to SDS PAGE followed by western blot with 18345-1-AP (MRPS23 antibody) at dilution of 1:2000 incubated at room temperature for 1.5 hours.



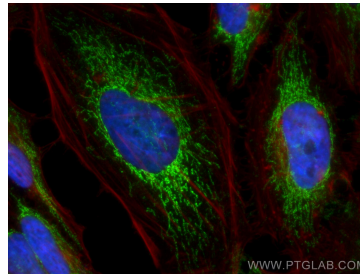
Immunohistochemical analysis of paraffin-embedded human liver cancer tissue slide using 18345-1-AP (MRPS23 antibody) at dilution of 1:400 (under 10x lens. Heat mediated antigen retrieval with Tris-EDTA buffer (pH 9.0).



Immunohistochemical analysis of paraffin-embedded human liver cancer tissue slide using 18345-1-AP (MRPS23 antibody) at dilution of 1:400 (under 40x lens. Heat mediated antigen retrieval with Tris-EDTA buffer (pH 9.0).



IP Result of anti-MRPS23 (IP:18345-1-AP, 4ug; Detection:18345-1-AP 1:300) with HeLa cells lysate 2600ug.



Immunofluorescent analysis of (4% PFA) fixed HeLa cells using MRPS23 antibody (18345-1-AP) at dilution of 1:200 and CoraLite@488-Conjugated AffiniPure Goat Anti-Rabbit IgG(H+L), CL594-Phalloidin (red).