

For Research Use Only

# DTX1 Polyclonal antibody

Catalog Number: 18350-1-AP

Featured Product

2 Publications



## Basic Information

### Catalog Number:

18350-1-AP

### Size:

150ul, Concentration: 650 ug/ml by Nanodrop and 353 ug/ml by Bradford method using BSA as the standard;

### Source:

Rabbit

### Isotype:

IgG

### Immunogen Catalog Number:

AG13172

### GenBank Accession Number:

BC048216

### GeneID (NCBI):

1840

### UNIPROT ID:

Q86Y01

### Full Name:

deltex homolog 1 (Drosophila)

### Calculated MW:

620 aa, 67 kDa

### Observed MW:

67 kDa

### Purification Method:

Antigen affinity purification

### Recommended Dilutions:

WB 1:500-1:1000

IHC 1:150-1:600

IF 1:50-1:200

## Applications

### Tested Applications:

WB, IHC, IF, ELISA

### Cited Applications:

WB

### Species Specificity:

human, mouse, rat

### Cited Species:

human

**Note-IHC: suggested antigen retrieval with TE buffer pH 9.0; (\*) Alternatively, antigen retrieval may be performed with citrate buffer pH 6.0**

### Positive Controls:

WB : Daudi cells, A375 cells

IHC : human colon tissue, human gliomas tissue, human testis tissue

IF : mouse olfactory epithelium tissue,

## Background Information

Deltex homolog 1 (E3 ubiquitin-protein ligase DTX1) is a regulator of Notch signaling, a signaling pathway involved in cell-cell communications that regulates a broad spectrum of cell-fate determinations. Probably acts both as a positive and negative regulator of Notch, depending on the developmental and cell context. Functions as an ubiquitin ligase protein in vivo, mediating ubiquitination and promoting degradation of MEK1, suggesting that it may regulate the Notch pathway via some ubiquitin ligase activity. DTX1 is conserved from Drosophila, and is expressed in a wide array of tissues, particularly in the central nervous system, testes, and endothelial cells, mainly colocalized with Notch1. It contains a RING-type zinc finger and 2 WWE domains.

## Notable Publications

Author	Pubmed ID	Journal	Application
Xu Wen	38029800	Virus Res	WB
Xin-Yu Ding	31854042	Cancer Sci	WB

## Storage

### Storage:

Store at -20°C. Stable for one year after shipment.

### Storage Buffer:

PBS with 0.02% sodium azide and 50% glycerol pH 7.3.

Aliquoting is unnecessary for -20°C storage

\*\*\* 20ul sizes contain 0.1% BSA

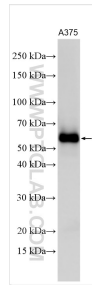
For technical support and original validation data for this product please contact:

T: 1 (888) 4PTGLAB (1-888-478-4522) (toll free in USA), or 1(312) 455-8498 (outside USA)

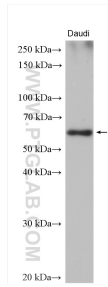
E: proteintech@ptglab.com  
W: ptglab.com

This product is exclusively available under Proteintech Group brand and is not available to purchase from any other manufacturer.

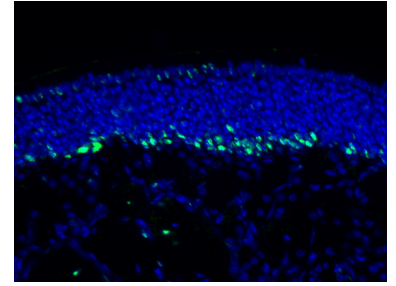
## Selected Validation Data



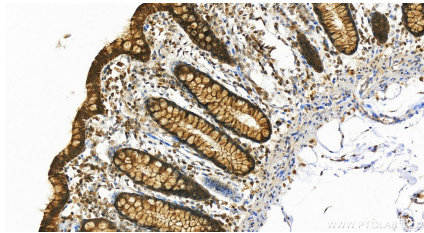
Various lysates were subjected to SDS PAGE followed by western blot with 18350-1-AP (DTX1 antibody) at dilution of 1:2000 incubated at room temperature for 1.5 hours.



Daudi cells were subjected to SDS PAGE followed by western blot with 18350-1-AP (DTX1 antibody) at dilution of 1:500 incubated at room temperature for 1.5 hours.



Fluorescent IHC on 1%PLP fixed frozen mouse olfactory epithelium tissue of DTX1 antibody (18350-1-AP). Basal cell staining as expected with Sus cell staining on the apical layer. By Dr. Brian Lin (Schwob Lab).



Immunohistochemical analysis of paraffin-embedded human normal colon slide using 18350-1-AP (DTX1 antibody) at dilution of 1:300 (under 20x lens). Heat mediated antigen retrieval with Tris-EDTA buffer (pH 9.0).