

For Research Use Only

# KLF13 Polyclonal antibody

Catalog Number: 18352-1-AP

Featured Product

14 Publications



## Basic Information

### Catalog Number:

18352-1-AP

### Size:

150ul, Concentration: 350 ug/ml by Nanodrop and 307 ug/ml by Bradford method using BSA as the standard;

### Source:

Rabbit

### Isotype:

IgG

### Immunogen Catalog Number:

AG13200

### GenBank Accession Number:

BC012741

### GeneID (NCBI):

51621

### UNIPROT ID:

Q9Y2Y9

### Full Name:

Kruppel-like factor 13

### Calculated MW:

31 kDa

### Observed MW:

37-45 kDa

### Purification Method:

Antigen affinity purification

### Recommended Dilutions:

WB 1:1000-1:4000

IHC 1:20-1:200

## Applications

### Tested Applications:

WB, IHC, ELISA

### Cited Applications:

WB, IHC, IF

### Species Specificity:

human, rat, mouse

### Cited Species:

human, mouse, rat

**Note-IHC: suggested antigen retrieval with TE buffer pH 9.0; (\*) Alternatively, antigen retrieval may be performed with citrate buffer pH 6.0**

### Positive Controls:

WB : HT-29 cells, rat liver tissue

IHC : human brain tissue,

## Background Information

Kruppel-like factor 13(KLF13) is a member of transcription factors, which contains 3 zinc finger DNA-binding domains. These transcription factors bind to CG-rich sequences and related GT and CACCC boxes. KLF13 involved in activation of transcription of variety of genes in the cells of erythroid lineage, such as GATA1, glycophorin B. It also binds to the A and A/B RANTES promoter binding sites, the same as NFkB, and then transactivates the RANTES gene. The calculated molecular weight of KLF13 is 31 kDa, but the modified KLF13 protein is about 37-45 kDa.

## Notable Publications

| Author         | Pubmed ID | Journal               | Application |
|----------------|-----------|-----------------------|-------------|
| Joshua E Burda | 35614216  | Nature                | IHC         |
| Chao-Chun Chen | 36381108  | J Clin Transl Hepatol | WB,IHC      |
| Weilong Yao    | 32523679  | Cell Biosci           | WB          |

## Storage

### Storage:

Store at -20°C. Stable for one year after shipment.

### Storage Buffer:

PBS with 0.02% sodium azide and 50% glycerol pH 7.3.

Aliquoting is unnecessary for -20°C storage

\*\*\* 20ul sizes contain 0.1% BSA

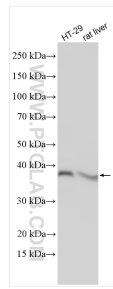
For technical support and original validation data for this product please contact:

T: 1 (888) 4PTGLAB (1-888-478-4522) (toll free in USA), or 1(312) 455-8498 (outside USA)

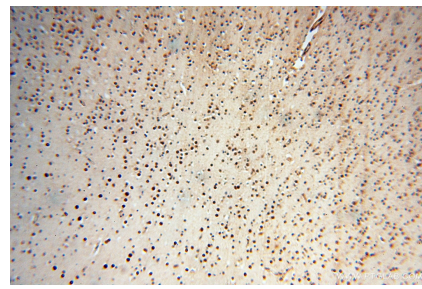
E: [proteintech@ptglab.com](mailto:proteintech@ptglab.com)  
W: [ptglab.com](http://ptglab.com)

This product is exclusively available under Proteintech Group brand and is not available to purchase from any other manufacturer.

## Selected Validation Data



Various lysates were subjected to SDS PAGE followed by western blot with 18352-1-AP (KLF13 antibody) at dilution of 1:2000 incubated at room temperature for 1.5 hours.



Immunohistochemical analysis of paraffin-embedded human brain using 18352-1-AP (KLF13 antibody) at dilution of 1:50 (under 10x lens).