

For Research Use Only

KISS1 Polyclonal antibody

Catalog Number: 18375-1-AP

Featured Product

3 Publications



Basic Information

Catalog Number:

18375-1-AP

Size:

150ul, Concentration: 320 µg/ml by Nanodrop and 307 µg/ml by Bradford method using BSA as the standard;

Source:

Rabbit

Isotype:

IgG

Immunogen Catalog Number:

AG13240

GenBank Accession Number:

BC022819

GeneID (NCBI):

3814

Full Name:

KISS-1 metastasis-suppressor

Calculated MW:

15 kDa

Observed MW:

16-20 kDa

Purification Method:

Antigen affinity purification

Recommended Dilutions:

WB 1:200-1:1000

IHC 1:100-1:500

IF 1:20-1:200

Applications

Tested Applications:

IF, IHC, WB, ELISA

Cited Applications:

IHC, WB

Species Specificity:

human, mouse

Cited Species:

human

Note-IHC: suggested antigen retrieval with TE buffer pH 9.0; (*) Alternatively, antigen retrieval may be performed with citrate buffer pH 6.0

Positive Controls:

WB: NIH/3T3 cells, human placenta tissue, mouse brain tissue

IHC: human liver cancer tissue, human lung cancer tissue

IF: NIH/3T3 cells,

Background Information

KISS1, also known as kisspeptin, is a metastasis suppressor protein that suppresses metastases of human melanomas and breast carcinomas without affecting tumorigenicity. It may regulate events downstream of cell-matrix adhesion, perhaps involving cytoskeletal reorganization. A C-terminally amidated peptide of KISS1, metastin (kisspeptin-54 or kp-54), functions as the endogenous ligand of the G-protein coupled receptor GPR54 (PMID: 11457843; 11385580). KISS1-GPR54 signaling is involved in the regulation of reproduction, playing an important role in initiating secretion of gonadotropin-releasing hormone (GnRH) at puberty (PMID: 18753370).

Notable Publications

Author	Pubmed ID	Journal	Application
Xinkai Huo	29435037	Oncol Lett	IHC
Jun-Jun Qiu	31577838	Int J Cancer	WB,IHC
Lei Zhang	32333091	Histochem Cell Biol	IHC

Storage

Storage:

Store at -20°C. Stable for one year after shipment.

Storage Buffer:

PBS with 0.02% sodium azide and 50% glycerol pH 7.3.

Aliquoting is unnecessary for -20°C storage

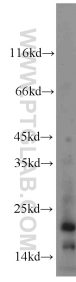
For technical support and original validation data for this product please contact:

T: 1 (888) 4PTGLAB (1-888-478-4522) (toll free in USA), or 1(312) 455-8498 (outside USA)

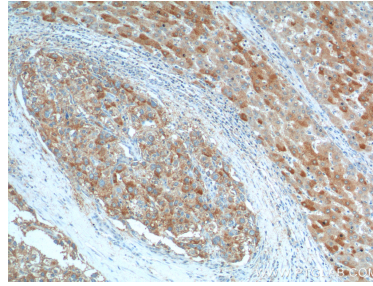
E: proteintech@ptglab.com
W: ptglab.com

This product is exclusively available under Proteintech Group brand and is not available to purchase from any other manufacturer.

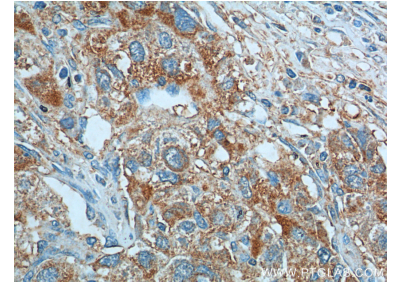
Selected Validation Data



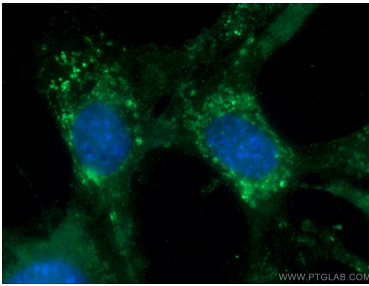
NIH/3T3 cells were subjected to SDS PAGE followed by western blot with 18375-1-AP (KISS1 antibody) at dilution of 1:500 incubated at room temperature for 1.5 hours.



Immunohistochemical analysis of paraffin-embedded human liver cancer tissue slide using 18375-1-AP (KISS1 Antibody) at dilution of 1:200 (under 10x lens).



Immunohistochemical analysis of paraffin-embedded human liver cancer tissue slide using 18375-1-AP (KISS1 Antibody) at dilution of 1:200 (under 40x lens).



Immunofluorescent analysis of NIH/3T3 cells using 18375-1-AP (KISS1 antibody) at dilution of 1:50 and Alexa Fluor 488-conjugated AffiniPure Goat Anti-Rabbit IgG(H+L).