

For Research Use Only

KISS1 Polyclonal antibody, PBS Only

Catalog Number: 18375-1-PBS

Featured Product



Basic Information

Catalog Number:

18375-1-PBS

Size:

100ug, Concentration: 1mg/ml by Nanodrop;

Source:

Rabbit

Isotype:

IgG

Immunogen Catalog Number:

AG13240

GenBank Accession Number:

BC022819

GeneID (NCBI):

3814

UNIPROT ID:

Q15726

Full Name:

KiSS-1 metastasis-suppressor

Calculated MW:

15 kDa

Observed MW:

15 kDa

Purification Method:

Antigen affinity purification

Applications

Tested Applications:

WB, IHC, ELISA

Species Specificity:

human

Background Information

KISS1, also known as kisspeptin, is a metastasis suppressor protein that suppresses metastases of human melanomas and breast carcinomas without affecting tumorigenicity. It may regulate events downstream of cell-matrix adhesion, perhaps involving cytoskeletal reorganization. A C-terminally amidated peptide of KISS1, metastin (kisspeptin-54 or kp-54), functions as the endogenous ligand of the G-protein coupled receptor GPR54 (PMID: 11457843; 11385580). KISS1-GPR54 signaling is involved in the regulation of reproduction, playing an important role in initiating secretion of gonadotropin-releasing hormone (GnRH) at puberty (PMID: 18753370).

Storage

Storage:

Store at -80°C.

Storage Buffer:

PBS only, pH7.3

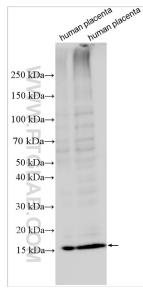
For technical support and original validation data for this product please contact:

T: 1 (888) 4PTGLAB (1-888-478-4522) (toll free in USA), or 1(312) 455-8498 (outside USA)

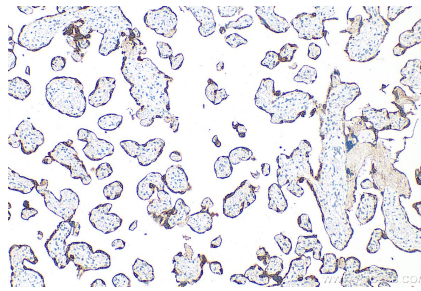
E: proteintech@ptglab.com
W: ptglab.com

This product is exclusively available under Proteintech Group brand and is not available to purchase from any other manufacturer.

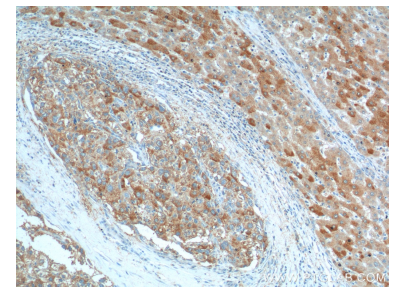
Selected Validation Data



Various lysates were subjected to SDS PAGE followed by western blot with 18375-1-AP (KISS1 antibody) at dilution of 1:2000 incubated at room temperature for 1.5 hours. This data was developed using the same antibody clone with 18375-1-PBS in a different storage buffer formulation.



Immunohistochemical analysis of paraffin-embedded human placenta tissue slide using 18375-1-AP (KISS1 antibody) at dilution of 1:800 (under 10x lens). Heat mediated antigen retrieval with Tris-EDTA buffer (pH 9.0). This data was developed using the same antibody clone with 18375-1-PBS in a different storage buffer formulation.



Immunohistochemical analysis of paraffin-embedded human liver cancer tissue slide using 18375-1-AP (KISS1 Antibody) at dilution of 1:200 (under 10x lens). This data was developed using the same antibody clone with 18375-1-PBS in a different storage buffer formulation.



Immunofluorescent analysis of NIH/3T3 cells using 18375-1-AP (KISS1 antibody) at dilution of 1:50 and Alexa Fluor 488-conjugated AffiniPure Goat Anti-Rabbit IgG(H+L).