

TOMM40 Polyclonal antibody

Catalog Number: 18409-1-AP

Featured Product

79 Publications

Basic Information

Catalog Number: 18409-1-AP	GenBank Accession Number: BC017224	Purification Method: Antigen affinity purification
Size: 150ul, Concentration: 900 µg/ml by Nanodrop;	GeneID (NCBI): 10452	Recommended Dilutions: WB 1:2000-1:16000 IP 0.5-4.0 µg for 1.0-3.0 mg of total protein lysate
Source: Rabbit	Full Name: translocase of outer mitochondrial membrane 40 homolog (yeast)	IHC 1:50-1:500 IF 1:200-1:800
Isotype: IgG	Calculated MW: 38 kDa	
Immunogen Catalog Number: AG13065	Observed MW: 38 kDa	

Applications

Tested Applications:
FC, IF, IHC, IP, WB, ELISA

Cited Applications:
CoIP, IF, IHC, IP, WB

Species Specificity:
human, mouse, rat

Cited Species:
human, rat, mouse, monkey, bovine

Note-IHC: suggested antigen retrieval with TE buffer pH 9.0; (*) Alternatively, antigen retrieval may be performed with citrate buffer pH 6.0

Positive Controls:

WB: HEK-293 cells, human brain tissue, HeLa cells, HepG2 cells, mouse kidney tissue, rat kidney tissue

IP: mouse liver tissue,

IHC: human liver tissue, human kidney tissue, human heart tissue, mouse heart tissue

IF: HepG2 cells, HeLa cells

Background Information

The translocase of outer mitochondria membrane 40 (TOMM40, also known as TOM40), located in the center of the TOM complex, is a channel-forming subunit of translocase. It can facilitate the fluid movement of preproteins into the mitochondria by associating with TOMM20. TOMM40 plays a role in the assembly of the mitochondrial membrane respiratory chain NADH dehydrogenase (Complex I) by forming a complex with BCAP31 and mediating the translocation of Complex I components from the cytosol to the mitochondria (PMID: 31206022). TOMM40 has been reported to be associated with late-onset neurodegenerative diseases such as Alzheimer's disease and Parkinson's disease.

Notable Publications

Author	Pubmed ID	Journal	Application
Emi Ogasawara	32946932	Pharmacol Res	WB
Christopher Lowden	34525369	Cell Rep	WB
Nathalie Dorison	32933822	Mol Genet Metab	IF

Storage

Storage:

Store at -20°C. Stable for one year after shipment.

Storage Buffer:

PBS with 0.02% sodium azide and 50% glycerol pH 7.3.

Aliquoting is unnecessary for -20°C storage

*** 20ul sizes contain 0.1% BSA

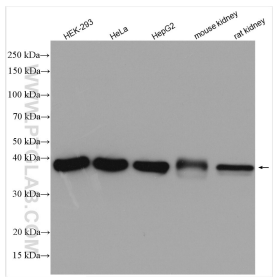
For technical support and original validation data for this product please contact:

T: 1 (888) 4PTGLAB (1-888-478-4522) (toll free in USA), or 1(312) 455-8498 (outside USA)

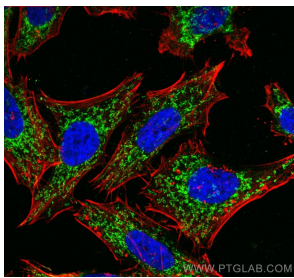
E: proteintech@ptglab.com
W: ptglab.com

This product is exclusively available under Proteintech Group brand and is not available to purchase from any other manufacturer.

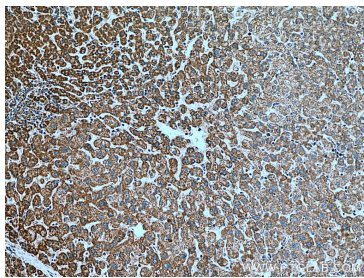
Selected Validation Data



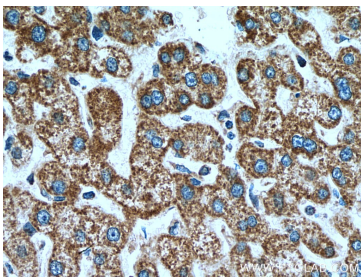
Various lysates were subjected to SDS PAGE followed by western blot with 18409-1-AP (TOMM40 antibody) at dilution of 1:8000 incubated at room temperature for 1.5 hours.



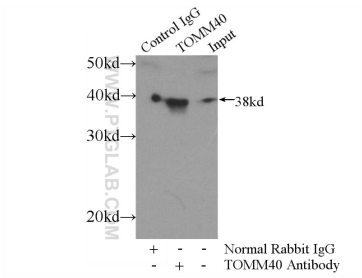
Immunofluorescent analysis of (4% PFA) fixed HepG2 cells using TOMM40 antibody (18409-1-AP) at dilution of 1:400 and CoraLite®488-Conjugated AffiniPure Goat Anti-Rabbit IgG(H+L), (CL594-Phalloidin, red).



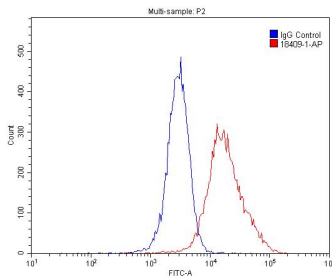
Immunohistochemical analysis of paraffin-embedded human liver tissue slide using 18409-1-AP (TOMM40 antibody) at dilution of 1:200 (under 10x lens). Heat mediated antigen retrieval with Tris-EDTA buffer (pH 9.0).



Immunohistochemical analysis of paraffin-embedded human liver tissue slide using 18409-1-AP (TOMM40 antibody) at dilution of 1:200 (under 40x lens). Heat mediated antigen retrieval with Tris-EDTA buffer (pH 9.0).



IP Result of anti-TOMM40 (IP:18409-1-AP, 4ug; Detection:18409-1-AP 1:1000) with mouse liver tissue lysate 4000ug.



1X10⁶ HepG2 cells were stained with .2ug TOM40 antibody (18409-1-AP, red) and control antibody (blue). Cells were fixed with 4% PFA and permeabilized with 0.1% Triton X-100. Alexa Fluor 488-conjugated AffiniPure Goat Anti-Rabbit IgG(H+L) with dilution 1:1500.