

For Research Use Only

# SPATA5L1 Polyclonal antibody

Catalog Number: 18414-1-AP



## Basic Information

<b>Catalog Number:</b> 18414-1-AP	<b>GenBank Accession Number:</b> BC000981	<b>Purification Method:</b> Antigen affinity purification
<b>Size:</b> 150ul , Concentration: 713 µg/ml by Bradford method using BSA as the standard;	<b>GeneID (NCBI):</b> 79029	<b>Recommended Dilutions:</b> WB 1:500-1:1000
<b>Source:</b> Rabbit	<b>Full Name:</b> spermatogenesis associated 5-like 1	
<b>Isotype:</b> IgG	<b>Calculated MW:</b> 81 kDa	
<b>Immunogen Catalog Number:</b> AG13269	<b>Observed MW:</b> 81 kDa	

## Applications

<b>Tested Applications:</b> WB, ELISA	<b>Positive Controls:</b> WB : MCF-7 cells, HeLa cells, Jurkat cells, K-562 cells
<b>Species Specificity:</b> human	

## Background Information

SPATA5L1 (Spermatogenesis-associated protein 5-like protein 1) belongs to the AAA+ATPase protein superfamily. A full-length SPATA5L1 transcript and a short SPATA5L1 variant can be produced in human by alternative splicing. Bi-allelic SPATA5L1 variants lead to a human disease characterized by sensorineural hearing loss with or without a nonprogressive mixed neurodevelopmental phenotype. And immunofluorescence analysis in rat hippocampal neurons demonstrated that SPATA5L1 was located in neuronal and glial cell nuclei, with more prominent expression in neurons (PubMed:34626583). SPATA5L1 also has 3 isoforms.

## Storage

**Storage:**  
Store at -20°C. Stable for one year after shipment.  
**Storage Buffer:**  
PBS with 0.02% sodium azide and 50% glycerol pH 7.3.  
Aliquoting is unnecessary for -20°C storage

\*\*\* 20ul sizes contain 0.1% BSA

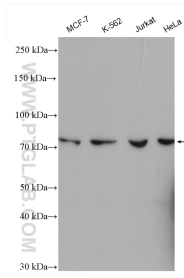
For technical support and original validation data for this product please contact:

T: 1 (888) 4PTGLAB (1-888-478-4522) (toll free in USA), or 1(312) 455-8498 (outside USA)

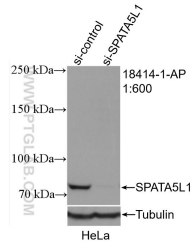
E: [proteintech@ptglab.com](mailto:proteintech@ptglab.com)  
W: [ptglab.com](http://ptglab.com)

This product is exclusively available under Proteintech Group brand and is not available to purchase from any other manufacturer.

## Selected Validation Data



Various lysates were subjected to SDS PAGE followed by western blot with 18414-1-AP (SPATA5L1 antibody) at dilution of 1:500 incubated at room temperature for 1.5 hours.



WB result of SPATA5L1 antibody (18414-1-AP; 1:600; incubated at room temperature for 1.5 hours) with sh-Control and sh-SPATA5L1 transfected HeLa cells.