

For Research Use Only

RPP30 Polyclonal antibody, PBS Only

Catalog Number: 18435-1-PBS



Basic Information

Catalog Number: 18435-1-PBS	GenBank Accession Number: BC006991	Purification Method: Antigen affinity purification
Size: 100ug , Concentration: 1 mg/ml by Nanodrop;	GeneID (NCBI): 10556	
Source: Rabbit	UNIPROT ID: P78346	
Isotype: IgG	Full Name: ribonuclease P/MRP 30kDa subunit	
Immunogen Catalog Number: AG8824	Calculated MW: 268 aa, 29 kDa	

Applications

Tested Applications:
IHC, IF/ICC, Indirect ELISA

Species Specificity:
human, mouse, rat

Background Information

RPP30 is part of the polyribonuclease P complex and the ribonuclease MRP complex, and is primarily involved in the 5' end maturation of tRNA, and may also be involved in other RNA metabolic processes, including RNA synthesis, processing, and maturation. RPP30 is widely expressed in a variety of tissues, including testis, lymph nodes, etc., and is also a potential biomarker for the diagnosis and prognosis of gastric cancer.

Storage

Storage:
Store at -80°C.
Storage Buffer:
PBS Only

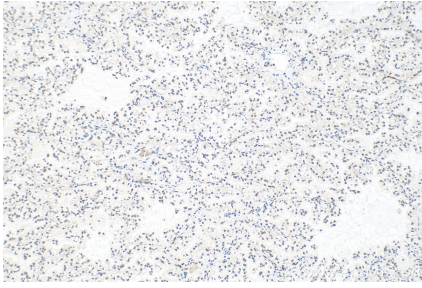
For technical support and original validation data for this product please contact:

T: 1 (888) 4PTGLAB (1-888-478-4522) (toll free
in USA), or 1(312) 455-8498 (outside USA)

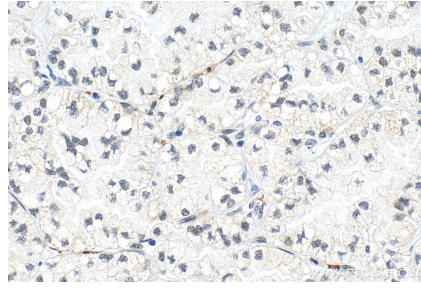
E: proteintech@ptglab.com
W: ptglab.com

This product is exclusively available under Proteintech Group brand and is not available to purchase from any other manufacturer.

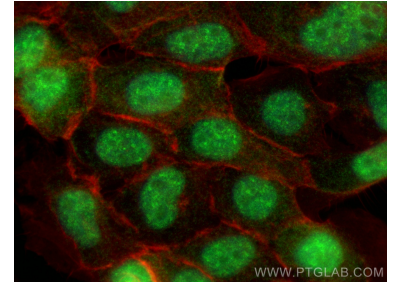
Selected Validation Data



Immunohistochemical analysis of paraffin-embedded human lung cancer tissue slide using 18435-1-AP (RPP30 antibody) at dilution of 1:200 (under 10x lens). Heat mediated antigen retrieval with Tris-EDTA buffer (pH 9.0). This data was developed using the same antibody clone with 18435-1-PBS in a different storage buffer formulation.



Immunohistochemical analysis of paraffin-embedded human lung cancer tissue slide using 18435-1-AP (RPP30 antibody) at dilution of 1:200 (under 40x lens). Heat mediated antigen retrieval with Tris-EDTA buffer (pH 9.0). This data was developed using the same antibody clone with 18435-1-PBS in a different storage buffer formulation.



Immunofluorescent analysis of (4% PFA) fixed U-251 cells using RPP30 antibody (18435-1-AP) at dilution of 1:400 and CoraLite@488-Conjugated AffiniPure Goat Anti-Rabbit IgG(H+L), CL594-Phalloidin (red). This data was developed using the same antibody clone with 18435-1-PBS in a different storage buffer formulation.