

For Research Use Only

MRPS30 Polyclonal antibody

Catalog Number: 18441-1-AP

2 Publications



Basic Information

Catalog Number:

18441-1-AP

Size:

150ul, Concentration: 200 ug/ml by Nanodrop and 187 ug/ml by Bradford method using BSA as the standard;

Source:

Rabbit

Isotype:

IgG

Immunogen Catalog Number:

AG13271

GenBank Accession Number:

BC007735

GeneID (NCBI):

10884

UNIPROT ID:

Q9NP92

Full Name:

mitochondrial ribosomal protein S30

Calculated MW:

439 aa, 50 kDa

Observed MW:

50 kDa

Purification Method:

Antigen affinity purification

Recommended Dilutions:

IF/ICC 1:50-1:500

Applications

Tested Applications:

WB, IF/ICC, ELISA

Cited Applications:

WB

Species Specificity:

human, mouse, rat

Cited Species:

human

Positive Controls:

IF/ICC : HepG2 cells,

Notable Publications

Author	Pubmed ID	Journal	Application
Xiangli Jiang	39198484	Nat Commun	WB
Liang Wang	37971521	Cell Mol Life Sci	WB

Storage

Storage:

Store at -20°C. Stable for one year after shipment.

Storage Buffer:

PBS with 0.02% sodium azide and 50% glycerol pH 7.3.

Aliquoting is unnecessary for -20°C storage

*** 20ul sizes contain 0.1% BSA

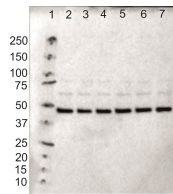
For technical support and original validation data for this product please contact:

T: 1 (888) 4PTGLAB (1-888-478-4522) (toll free in USA), or 1(312) 455-8498 (outside USA)

E: proteintech@ptglab.com
W: ptglab.com

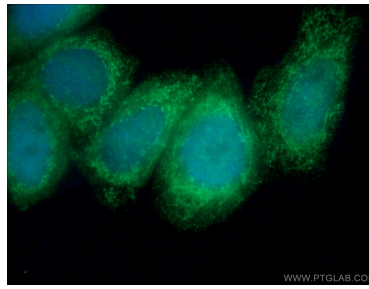
This product is exclusively available under Proteintech Group brand and is not available to purchase from any other manufacturer.

Selected Validation Data



Lane 1 contains BioRad dual color protein standard.
Lanes 2-7 each contain 15µg of control human myotube protein.

WB result of MRPS30 antibody (18441-1-AP, 1:1000)
with with 15µg of control human myotube protein
by Max Pohjanpelto, University of Helsinki.



Immunofluorescent analysis of (4% PFA) fixed
HepG2 cells using 18441-1-AP (MRPS30 antibody)
at dilution of 1:50 and Alexa Fluor 488-conjugated
Goat Anti-Rabbit IgG(H+L).