

For Research Use Only

# PPIF-Specific Polyclonal antibody

Catalog Number: 18466-1-AP **6 Publications**



## Basic Information

<b>Catalog Number:</b> 18466-1-AP	<b>GenBank Accession Number:</b> BC005020	<b>Purification Method:</b> Antigen affinity purification
<b>Size:</b> 150ul , Concentration: 500 µg/ml by Nanodrop and 133 µg/ml by Bradford method using BSA as the standard;	<b>GeneID (NCBI):</b> 10105	<b>Recommended Dilutions:</b> WB 1:1000-1:4000 IP 0.5-4.0 ug for IP and 1:500-1:2000 for WB
<b>Source:</b> Rabbit	<b>Full Name:</b> peptidylprolyl isomerase F	<b>IHC 1:100-1:400</b>
<b>Isotype:</b> IgG	<b>Calculated MW:</b> 22 kDa	<b>IF 1:10-1:100</b>
<b>Immunogen Catalog Number:</b> AG13151	<b>Observed MW:</b> 22 kDa	

## Applications

### Tested Applications:

IF, IHC, IP, WB, ELISA

### Cited Applications:

IF, IHC, WB

### Species Specificity:

human, mouse, rat

### Cited Species:

human, mouse

**Note-IHC: suggested antigen retrieval with TE buffer pH 9.0; (\*) Alternatively, antigen retrieval may be performed with citrate buffer pH 6.0**

### Positive Controls:

**WB** : HeLa cells, HepG2 cells, human heart tissue, rat heart tissue, mouse heart tissue

**IP** : mouse heart tissue,

**IHC** : human heart tissue,

**IF** : MCF-7 cells,

## Background Information

PPIF, also named as CYP3, PPIase F and Rotamase F, belongs to the cyclophilin-type PPIase family. PPIases accelerate the folding of proteins. It catalyzes the cis-trans isomerization of proline imidic peptide bonds in oligopeptides. PPIF is a mitochondrial matrix protein involved in the induction of necrotic and apoptotic cell death through the activation of the mitochondrial permeability transition (mPT) pore. This antibody is immunized with full length gene PPIF and absorbed by PPIA. So this antibody is specific to PPIF

## Notable Publications

Author	Pubmed ID	Journal	Application
Jun Jia	36273900	Biol Pharm Bull	WB
Hao Liu	36245295	EMBO J	WB
Linlin Yang	33495413	Aging (Albany NY)	IHC

## Storage

### Storage:

Store at -20°C. Stable for one year after shipment.

### Storage Buffer:

PBS with 0.02% sodium azide and 50% glycerol pH 7.3.

Aliquoting is unnecessary for -20°C storage

\*\*\* 20ul sizes contain 0.1% BSA

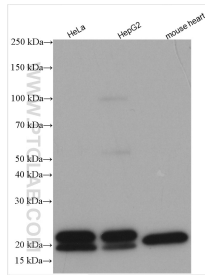
For technical support and original validation data for this product please contact:

T: 1 (888) 4PTGLAB (1-888-478-4522) (toll free in USA), or 1(312) 455-8498 (outside USA)

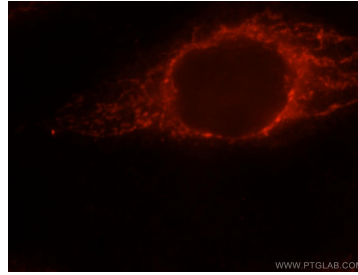
E: proteintech@ptglab.com  
W: ptglab.com

This product is exclusively available under Proteintech Group brand and is not available to purchase from any other manufacturer.

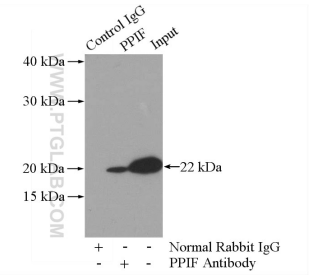
## Selected Validation Data



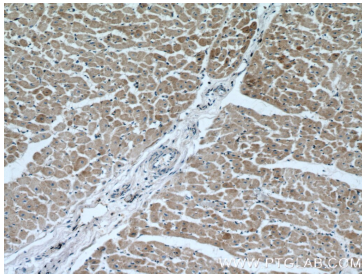
Various lysates were subjected to SDS PAGE followed by western blot with 18466-1-AP (PPIF-Specific antibody) at dilution of 1:2000 incubated at room temperature for 1.5 hours.



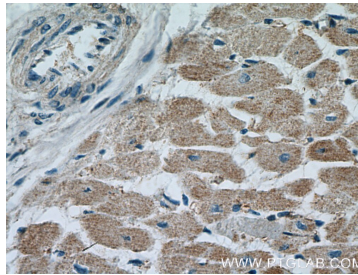
Immunofluorescent analysis of MCF-7 cells, using PPIF antibody 18466-1-AP at 1:25 dilution and Rhodamine-labeled goat anti-rabbit IgG (red).



IP Result of anti-PPIF-Specific (IP:18466-1-AP, 3 $\mu$ g; Detection:18466-1-AP 1:1000) with mouse heart tissue lysate 4000 $\mu$ g.



Immunohistochemical analysis of paraffin-embedded human heart tissue slide using 18466-1-AP (CYPA Antibody) at dilution of 1:200 (under 10x lens).



Immunohistochemical analysis of paraffin-embedded human heart tissue slide using 18466-1-AP (CYPA Antibody) at dilution of 1:200 (under 40x lens).