

For Research Use Only

# CYP1B1 Polyclonal antibody

Catalog Number: 18505-1-AP

14 Publications



## Basic Information

<b>Catalog Number:</b> 18505-1-AP	<b>GenBank Accession Number:</b> BC012049	<b>Purification Method:</b> Antigen affinity purification
<b>Size:</b> 150ul , Concentration: 400 µg/ml by Nanodrop and 267 µg/ml by Bradford method using BSA as the standard;	<b>GeneID (NCBI):</b> 1545	<b>Recommended Dilutions:</b> WB 1:500-1:1000 IHC 1:20-1:200
<b>Source:</b> Rabbit	<b>Full Name:</b> cytochrome P450, family 1, subfamily B, polypeptide 1	
<b>Isotype:</b> IgG	<b>Calculated MW:</b> 61 kDa	
<b>Immunogen Catalog Number:</b> AG13357	<b>Observed MW:</b> 52 kDa	

## Applications

### Tested Applications:

IHC, WB, ELISA

### Cited Applications:

IF, IHC, WB

### Species Specificity:

human, mouse, rat

### Cited Species:

human, rat, mouse

**Note-IHC: suggested antigen retrieval with TE buffer pH 9.0; (\*) Alternatively, antigen retrieval may be performed with citrate buffer pH 6.0**

### Positive Controls:

WB : PC-3 cells, mouse heart tissue, MCF-7 cells, rat brain tissue, rat liver tissue

IHC : human colon cancer tissue,

## Background Information

Cytochrome P450 CYP1B1 is a recently cloned dioxin-inducible form of the cytochrome P450 family of xenobiotic metabolizing enzymes. CYP1B1 was found to be expressed at a high frequency in a wide range of human cancers of different histogenetic types, including cancers of the breast, colon, lung, esophagus, skin, lymph node, brain, and testis. There was no detectable immunostaining for CYP1B1 in normal tissues.(PMID:9230218). CYP1B1 is a 60 kDa protein that it also can be detected a band of 51 kDa or 57 kDa through the western blot(PMID:9525272; PMID: 9525272).

## Notable Publications

Author	Pubmed ID	Journal	Application
Xiaowen Wang	31543430	J Dermatol Sci	WB
Ruqun Zheng	36273747	J Ethnopharmacol	WB
Yizhi Zhan	36258210	BMC Med	WB

## Storage

### Storage:

Store at -20°C. Stable for one year after shipment.

### Storage Buffer:

PBS with 0.02% sodium azide and 50% glycerol pH 7.3.

Aliquoting is unnecessary for -20°C storage

\*\*\* 20ul sizes contain 0.1% BSA

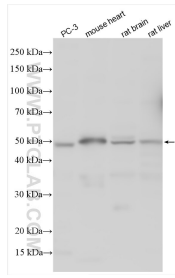
For technical support and original validation data for this product please contact:

T: 1 (888) 4PTGLAB (1-888-478-4522) (toll free in USA), or 1(312) 455-8498 (outside USA)

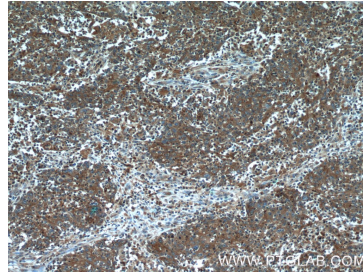
E: proteintech@ptglab.com  
W: ptglab.com

This product is exclusively available under Proteintech Group brand and is not available to purchase from any other manufacturer.

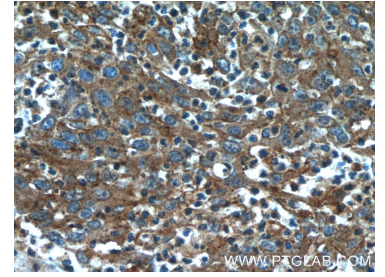
## Selected Validation Data



Various lysates were subjected to SDS PAGE followed by western blot with 18505-1-AP (CYP1B1 antibody) at dilution of 1:500 incubated at room temperature for 1.5 hours.



Immunohistochemical analysis of paraffin-embedded human colon cancer tissue slide using 18505-1-AP (CYP1B1 Antibody) at dilution of 1:50 (under 10x lens).



Immunohistochemical analysis of paraffin-embedded human colon cancer tissue slide using 18505-1-AP (CYP1B1 Antibody) at dilution of 1:50 (under 40x lens).