

For Research Use Only

ALPPL2 Polyclonal antibody, PBS Only

Catalog Number: 18506-1-PBS



Basic Information

Catalog Number:

18506-1-PBS

Size:

100ug, Concentration: 1 mg/ml by Nanodrop;

Source:

Rabbit

Isotype:

IgG

Immunogen Catalog Number:

AG13360

GenBank Accession Number:

BC014139

GeneID (NCBI):

251

UNIPROT ID:

P10696

Full Name:

alkaline phosphatase, placental-like

2

Calculated MW:

57 kDa

Purification Method:

Antigen affinity purification

Applications

Tested Applications:

WB, IHC, Indirect ELISA

Species Specificity:

human, mouse, rat

Background Information

ALPPL2 (alkaline phosphatase placental-like 2), a member of the human alkaline phosphatase family, could be a potential biomarker for early diagnosis of Pancreatic ductal adenocarcinoma.

Storage

Storage:

Store at -80°C.

Storage Buffer:

PBS only, pH7.3

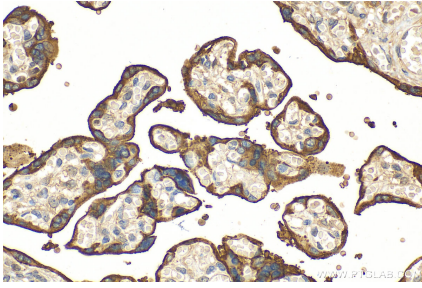
For technical support and original validation data for this product please contact:

T: 1 (888) 4PTGLAB (1-888-478-4522) (toll free in USA), or 1(312) 455-8498 (outside USA)

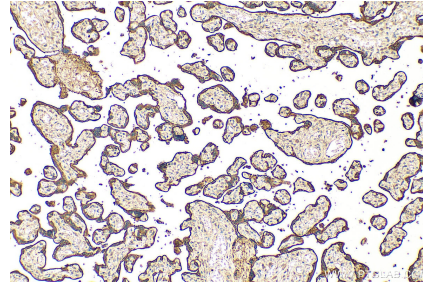
E: proteintech@ptglab.com
W: ptglab.com

This product is exclusively available under Proteintech Group brand and is not available to purchase from any other manufacturer.

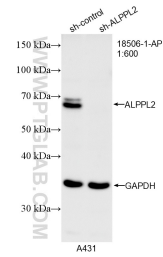
Selected Validation Data



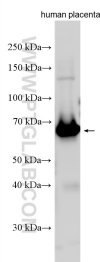
Immunohistochemical analysis of paraffin-embedded human placenta tissue slide using 18506-1-AP (ALPPL2 antibody) at dilution of 1:800 (under 40x lens). Heat mediated antigen retrieval with Tris-EDTA buffer (pH 9.0). This data was developed using the same antibody clone with 18506-1-PBS in a different storage buffer formulation.



Immunohistochemical analysis of paraffin-embedded human placenta tissue slide using 18506-1-AP (ALPPL2 antibody) at dilution of 1:800 (under 10x lens). Heat mediated antigen retrieval with Tris-EDTA buffer (pH 9.0). This data was developed using the same antibody clone with 18506-1-PBS in a different storage buffer formulation.



WB result of ALPPL2 antibody (18506-1-AP; 1:600; incubated at room temperature for 1.5 hours) with sh-Control and sh-ALPPL2 transfected A431 cells. This data was developed using the same antibody clone with 18506-1-PBS in a different storage buffer formulation.



Various lysates were subjected to SDS PAGE followed by western blot with 18506-1-AP (ALPPL2 antibody) at dilution of 1:2000 incubated at room temperature for 1.5 hours. This data was developed using the same antibody clone with 18506-1-PBS in a different storage buffer formulation.