

For Research Use Only

PRUNE Polyclonal antibody

Catalog Number: 18537-1-AP

Featured Product



Basic Information

Catalog Number:

18537-1-AP

Size:

150ul, Concentration: 240 µg/ml by Nanodrop and 133 µg/ml by Bradford method using BSA as the standard;

Source:

Rabbit

Isotype:

IgG

Immunogen Catalog Number:

AG13275

GenBank Accession Number:

BC025304

GeneID (NCBI):

58497

UNIPROT ID:

Q86TP1

Full Name:

prune homolog (Drosophila)

Calculated MW:

453 aa, 50 kDa

Observed MW:

60 kDa

Purification Method:

Antigen affinity purification

Recommended Dilutions:

WB 1:1000-1:4000

IP 0.5-4.0 ug for 1.0-3.0 mg of total protein lysate

IHC 1:20-1:200

IF 1:10-1:100

Applications

Tested Applications:

WB, IP, IF, IHC, ELISA

Species Specificity:

human, mouse, rat

Note-IHC: suggested antigen retrieval with TE buffer pH 9.0; (*) Alternatively, antigen retrieval may be performed with citrate buffer pH 6.0

Positive Controls:

WB : A431 cells, HepG2 cells

IP : HepG2 cells,

IHC : human liver cancer tissue,

IF : HepG2 cells,

Storage

Storage:

Store at -20°C. Stable for one year after shipment.

Storage Buffer:

PBS with 0.02% sodium azide and 50% glycerol pH 7.3.

Aliquoting is unnecessary for -20°C storage

*** 20ul sizes contain 0.1% BSA

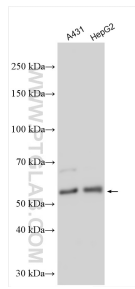
For technical support and original validation data for this product please contact:

T: 1 (888) 4PTGLAB (1-888-478-4522) (toll free in USA), or 1(312) 455-8498 (outside USA)

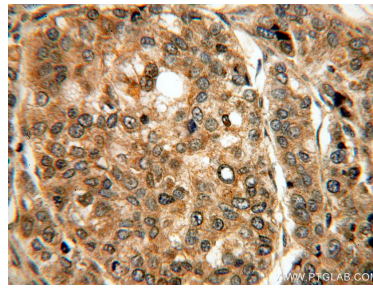
E: proteintech@ptglab.com
W: ptglab.com

This product is exclusively available under Proteintech Group brand and is not available to purchase from any other manufacturer.

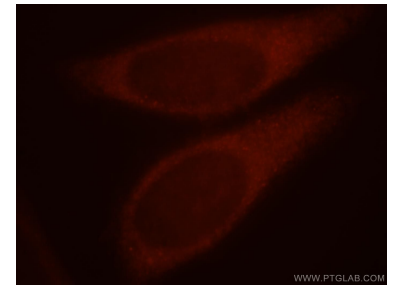
Selected Validation Data



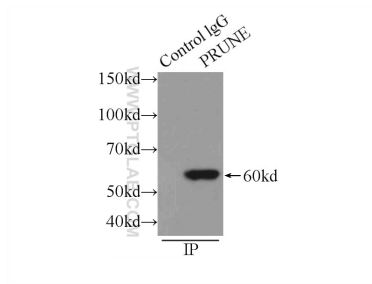
Various lysates were subjected to SDS PAGE followed by western blot with 18537-1-AP (PRUNE antibody) at dilution of 1:2000 incubated at room temperature for 1.5 hours.



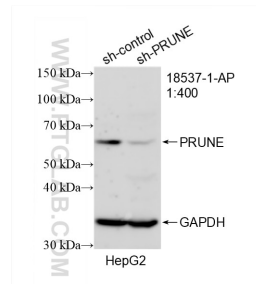
Immunohistochemical analysis of paraffin-embedded human liver cancer using 18537-1-AP (PRUNE antibody) at dilution of 1:100 (under 40x lens).



Immunofluorescent analysis of HepG2 cells, using PRUNE antibody 18537-1-AP at 1:25 dilution and Rhodamine-labeled goat anti-rabbit IgG (red).



IP result of anti-PRUNE (IP:18537-1-AP, 3ug; Detection:18537-1-AP 1:500) with HepG2 cells lysate 1720ug.



WB result of PRUNE antibody (18537-1-AP; 1:400; incubated at room temperature for 1.5 hours) with sh-Control and sh-PRUNE transfected HepG2 cells.