

For Research Use Only

# PRUNE Polyclonal antibody, PBS Only

Catalog Number: 18537-1-PBS

Featured Product



## Basic Information

Catalog Number:

18537-1-PBS

Size:

100ug, Concentration: 1 mg/ml by Nanodrop;

Source:

Rabbit

Isotype:

IgG

Immunogen Catalog Number:

AG13275

GenBank Accession Number:

BC025304

GeneID (NCBI):

58497

UNIPROT ID:

Q86TP1

Full Name:

prune homolog (Drosophila)

Calculated MW:

453 aa, 50 kDa

Observed MW:

60 kDa

Purification Method:

Antigen affinity purification

## Applications

Tested Applications:

WB, IHC, IF/ICC, IP, Indirect ELISA

Species Specificity:

human, mouse, rat

## Storage

Storage:

Store at -80°C.

Storage Buffer:

PBS Only

For technical support and original validation data for this product please contact:

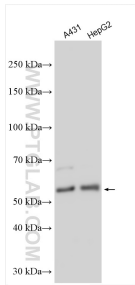
T: 1 (888) 4PTGLAB (1-888-478-4522) (toll free in USA), or 1(312) 455-8498 (outside USA)

E: [proteintech@ptglab.com](mailto:proteintech@ptglab.com)

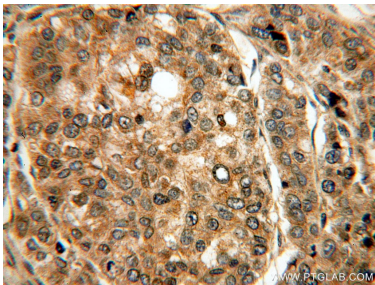
W: [ptglab.com](http://ptglab.com)

This product is exclusively available under Proteintech Group brand and is not available to purchase from any other manufacturer.

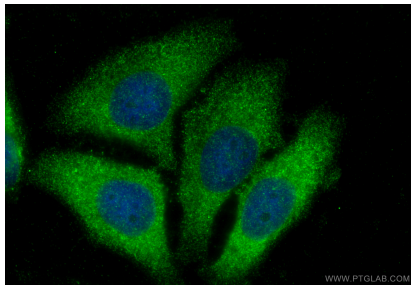
Selected Validation Data



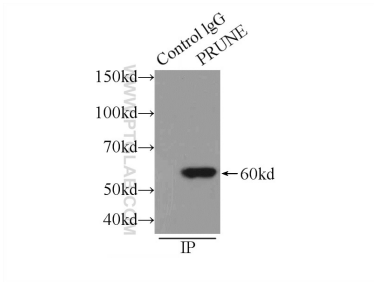
Various lysates were subjected to SDS PAGE followed by western blot with 18537-1-AP (PRUNE antibody) at dilution of 1:2000 incubated at room temperature for 1.5 hours. This data was developed using the same antibody clone with 18537-1-PBS in a different storage buffer formulation.



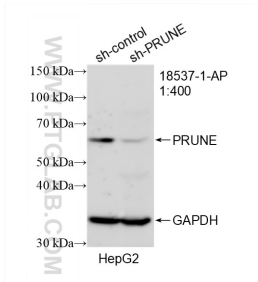
Immunohistochemical analysis of paraffin-embedded human liver cancer using 18537-1-AP (PRUNE antibody) at dilution of 1:100 (under 40x lens). This data was developed using the same antibody clone with 18537-1-PBS in a different storage buffer formulation.



Immunofluorescent analysis of (-20°C Ethanol) fixed HepG2 cells using PRUNE antibody (18537-1-AP) at dilution of 1:200 and Multi-rAb CoraLite® Plus 488-Goat Anti-Rabbit Recombinant Secondary Antibody (H+L) (RGAR002). This data was developed using the same antibody clone with 18537-1-PBS in a different storage buffer formulation.



IP result of anti-PRUNE (IP:18537-1-AP, 3ug; Detection:18537-1-AP 1:500) with HepG2 cells lysate 1720ug. This data was developed using the same antibody clone with 18537-1-PBS in a different storage buffer formulation.



WB result of PRUNE antibody (18537-1-AP; 1:400; incubated at room temperature for 1.5 hours) with sh-Control and sh-PRUNE transfected HepG2 cells. This data was developed using the same antibody clone with 18537-1-PBS in a different storage buffer formulation.