

For Research Use Only

SH2D2A Polyclonal antibody

Catalog Number: 18539-1-AP

1 Publications



Basic Information

Catalog Number:

18539-1-AP

Size:

150ul, Concentration: 600 ug/ml by Nanodrop and 573 ug/ml by Bradford method using BSA as the standard;

Source:

Rabbit

Isotype:

IgG

Immunogen Catalog Number:

AG13355

GenBank Accession Number:

BC012107

GeneID (NCBI):

9047

UNIPROT ID:

Q9NP31

Full Name:

SH2 domain protein 2A

Calculated MW:

43 kDa

Observed MW:

45-50 kDa

Purification Method:

Antigen affinity purification

Recommended Dilutions:

WB 1:500-1:2000

IHC 1:20-1:200

Applications

Tested Applications:

WB, IHC, FC (Intra), ELISA

Cited Applications:

WB

Species Specificity:

human

Cited Species:

human

Note-IHC: suggested antigen retrieval with TE buffer pH 9.0; (*) Alternatively, antigen retrieval may be performed with citrate buffer pH 6.0

Positive Controls:

WB : K-562 cells,

IHC : human heart tissue,

Notable Publications

Author	Pubmed ID	Journal	Application
Ruo-Yi Guo	37315471	Mult Scler Relat Disord	WB

Storage

Storage:

Store at -20°C. Stable for one year after shipment.

Storage Buffer:

PBS with 0.02% sodium azide and 50% glycerol pH 7.3.

Aliquoting is unnecessary for -20°C storage

*** 20ul sizes contain 0.1% BSA

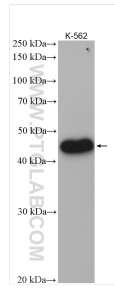
For technical support and original validation data for this product please contact:

T: 1 (888) 4PTGLAB (1-888-478-4522) (toll free in USA), or 1(312) 455-8498 (outside USA)

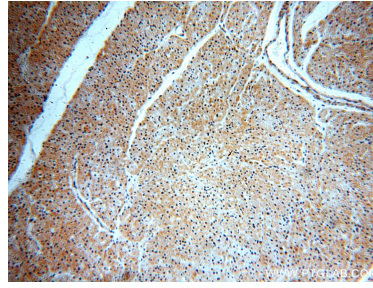
E: proteintech@ptglab.com
W: ptglab.com

This product is exclusively available under Proteintech Group brand and is not available to purchase from any other manufacturer.

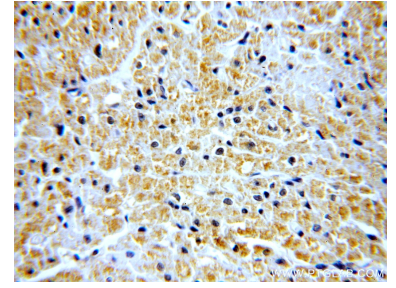
Selected Validation Data



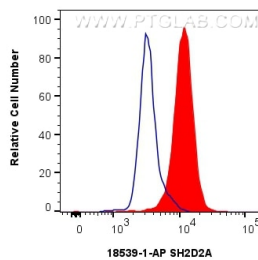
K-562 cells were subjected to SDS PAGE followed by western blot with 18539-1-AP (SH2D2A antibody) at dilution of 1:1000 incubated at room temperature for 1.5 hours.



Immunohistochemical analysis of paraffin-embedded human heart using 18539-1-AP (SH2D2A antibody) at dilution of 1:50 (under 10x lens).



Immunohistochemical analysis of paraffin-embedded human heart using 18539-1-AP (SH2D2A antibody) at dilution of 1:50 (under 40x lens).



1×10^6 K-562 cells were intracellularly stained with 0.4 μ g SH2D2A Polyclonal antibody (18539-1-AP) and CoraLite®488-Conjugated AffiniPure Goat Anti-Rabbit IgG(H+L) (SA00013-2)(red), or 0.4 μ g Rabbit IgG control Rabbit PolyAb (30000-0-AP) (blue). Cells were fixed with 4% PFA and permeabilized with Flow Cytometry Perm Buffer (PF00011-C).