

For Research Use Only

QPCT Polyclonal antibody, PBS Only

Catalog Number:18571-1-PBS



Basic Information

Catalog Number: 18571-1-PBS	GenBank Accession Number: BC047756	Purification Method: Antigen affinity purification
Size: 100ug , Concentration: 1 mg/ml by Nanodrop;	GeneID (NCBI): 25797	
Source: Rabbit	UNIPROT ID: Q16769	
Isotype: IgG	Full Name: glutaminyl-peptide cyclotransferase	
Immunogen Catalog Number: AG13416	Calculated MW: 361 aa, 41 kDa	
	Observed MW: 41 kDa, 35 kDa	

Applications

Tested Applications:
WB, IF/ICC, Indirect ELISA

Species Specificity:
human

Background Information

Glutaminyl-peptide cyclotransferase (QPCT) gene encodes glutaminyl cyclase (QC), an enzyme that plays a role in post-translational modification of proteins by converting N-terminal glutamate to pyroglutamine. QPCT plays a specific role in promoting tumor cell proliferation, migration and angiogenesis as well as in inhibiting tumor cell apoptosis in cancers such as thyroid cancer and renal cell carcinoma (PMID: 38417050). Human QPCT has two isoforms produced by alternative splicing, 41 kDa and 35 kDa, respectively.

Storage

Storage:
Store at -80°C.

Storage Buffer:
PBS only, pH7.3

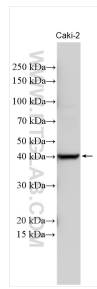
For technical support and original validation data for this product please contact:

T: 1 (888) 4PTGLAB (1-888-478-4522) (toll free in USA), or 1(312) 455-8498 (outside USA)

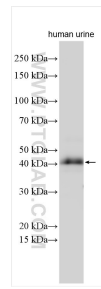
E: proteintech@ptglab.com
W: ptglab.com

This product is exclusively available under Proteintech Group brand and is not available to purchase from any other manufacturer.

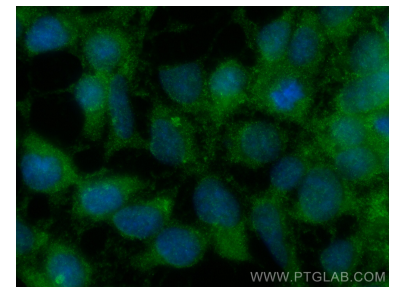
Selected Validation Data



Various lysates were subjected to SDS PAGE followed by western blot with 18571-1-AP (QPCT antibody) at dilution of 1:1000 incubated at room temperature for 1.5 hours. This data was developed using the same antibody clone with 18571-1-PBS in a different storage buffer formulation.



Various lysates were subjected to SDS PAGE followed by western blot with 18571-1-AP (QPCT antibody) at dilution of 1:1000 incubated at room temperature for 1.5 hours. This data was developed using the same antibody clone with 18571-1-PBS in a different storage buffer formulation.



Immunofluorescent analysis of (-20°C Ethanol) fixed HEK-293 cells using QPCT antibody (18571-1-AP) at dilution of 1:200 and CoraLite®488-Conjugated Goat Anti-Rabbit IgG(H+L) (SA00013-2). This data was developed using the same antibody clone with 18571-1-PBS in a different storage buffer formulation.