

For Research Use Only

# FOXO1 Polyclonal antibody, PBS Only

Catalog Number: 18592-1-PBS

Featured Product



## Basic Information

### Catalog Number:

18592-1-PBS

### Size:

100ug, Concentration: 1 mg/ml by Nanodrop;

### Source:

Rabbit

### Isotype:

IgG

### Immunogen Catalog Number:

AG13296

### GenBank Accession Number:

BC021981

### GeneID (NCBI):

2308

### UNIPROT ID:

Q12778

### Full Name:

forkhead box O1

### Calculated MW:

655 aa, 70 kDa

### Observed MW:

70-80 kDa

### Purification Method:

Antigen affinity purification

## Applications

### Tested Applications:

WB, IHC, IF/ICC, FC (Intra), IP, Indirect ELISA

### Species Specificity:

human, mouse, rat

## Background Information

FOXO1, also named as FOXO1A, FKHR and FKH1, is a member of the FOXO subfamily of Forkhead transcription factors. FOXO1 is a transcription factor which acts as a regulator of cell responses to oxidative stress. FOXO1 interacts with LRPPRC and SIRT1. In the presence of KIRT1, FOXO1 mediates down-regulation of cyclin D1 and up-regulation of CDKN1B levels which are required for cell transition from proliferative growth to quiescence. FOXO1 contains three predicted protein kinase B phosphorylation sites (Thr-24, Ser-256, and Ser-319) that are conserved in other FOXO proteins. The t(2;13) and the variant t(1;13) translocations generate PAX3/FKHR and PAX7/FKHR fusion proteins respectively. The resulting protein is a transcriptional activator. Defects in FOXO1 are a cause of rhabdomyosarcoma type 2 (RMS2).

## Storage

### Storage:

Store at -80°C.

### Storage Buffer:

PBS Only

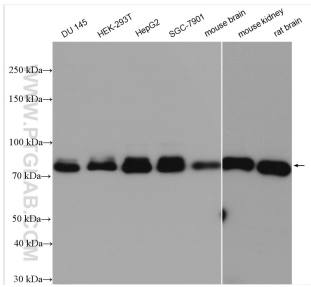
For technical support and original validation data for this product please contact:

T: 1 (888) 4PTGLAB (1-888-478-4522) (toll free in USA), or 1(312) 455-8498 (outside USA)

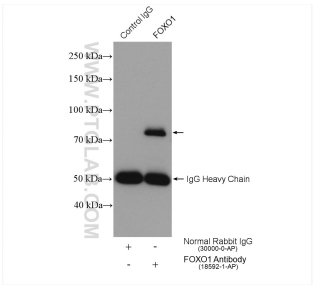
E: [proteintech@ptglab.com](mailto:proteintech@ptglab.com)  
W: [ptglab.com](http://ptglab.com)

This product is exclusively available under Proteintech Group brand and is not available to purchase from any other manufacturer.

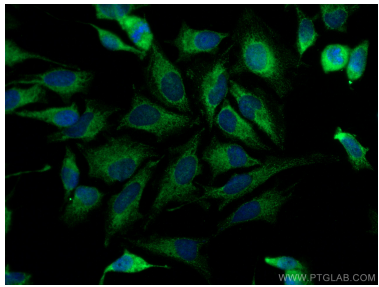
Selected Validation Data



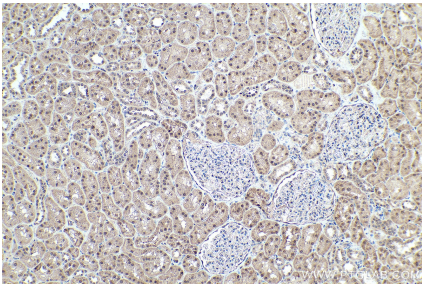
Various lysates were subjected to SDS PAGE followed by western blot with 18592-1-AP (FOXO1 antibody) at dilution of 1:4000 incubated at room temperature for 1.5 hours. This data was developed using the same antibody clone with 18592-1-PBS in a different storage buffer formulation.



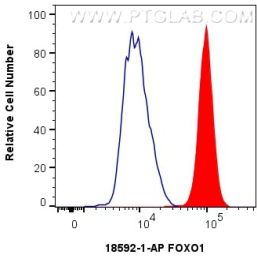
IP result of anti-FOXO1 (IP:18592-1-AP, 4ug; Detection:18592-1-AP 1:2000) with HepG2 cells lysate 960 ug. This data was developed using the same antibody clone with 18592-1-PBS in a different storage buffer formulation.



Immunofluorescent analysis of (-20°C Methanol) fixed HeLa cells using FOXO1 antibody (18592-1-AP) at dilution of 1:400 and CoraLite®488-Conjugated AffiniPure Goat Anti-Rabbit IgG(H+L). This data was developed using the same antibody clone with 18592-1-PBS in a different storage buffer formulation.



Immunohistochemical analysis of paraffin-embedded human kidney tissue slide using 18592-1-AP (FOXO1 antibody) at dilution of 1:2000 (under 10x lens). Heat mediated antigen retrieval with Tris-EDTA buffer (pH 9.0). This data was developed using the same antibody clone with 18592-1-PBS in a different storage buffer formulation.



1x10<sup>6</sup> Daudi cells were intracellularly stained with 0.4 ug FOXO1 Polyclonal antibody (18592-1-AP) and CoraLite®488-Conjugated Goat Anti-Rabbit IgG(H+L) (SA00013-2)(red), or 0.4 ug Rabbit IgG control Rabbit PolyAb (30000-0-AP) (blue). Cells were fixed with 4% PFA and permeabilized with Flow Cytometry Perm Buffer (PF00011-C). This data was developed using the same antibody clone with 18592-1-PBS in a different storage buffer formulation.