

CD23 Polyclonal antibody

Catalog Number: 18642-1-AP

Basic Information

Catalog Number: 18642-1-AP	GenBank Accession Number: BC014108	Purification Method: Antigen affinity purification
Size: 150ul , Concentration: 400 µg/ml by Nanodrop and 253 µg/ml by Bradford method using BSA as the standard;	GeneID (NCBI): 2208	Recommended Dilutions: WB 1:500-1:1000 IHC 1:20-1:200
Source: Rabbit	Full Name: Fc fragment of IgE, low affinity II, receptor for (CD23)	
Isotype: IgG	Calculated MW: 36 kDa	
Immunogen Catalog Number: AG13348	Observed MW: 38-42 kDa	

Applications

Tested Applications: FC, IHC, WB, ELISA	Positive Controls:
Species Specificity: human	WB : Raji cells,
Note-IHC: suggested antigen retrieval with TE buffer pH 9.0; (*) Alternatively, antigen retrieval may be performed with citrate buffer pH 6.0	IHC : human tonsillitis tissue, human lymphoma tissue

Background Information

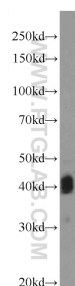
CD23, also known as low affinity immunoglobulin epsilon Fc receptor, is a transmembrane glycoprotein present on a subpopulation of B lymphocytes in germinal centres, EBV-transformed B-lymphoblastoid cell lines, follicular dendritic cells, and a subpopulation of peripheral blood cells. CD23 has essential roles in the regulation of IgE production and in the differentiation of B-cells.

Storage

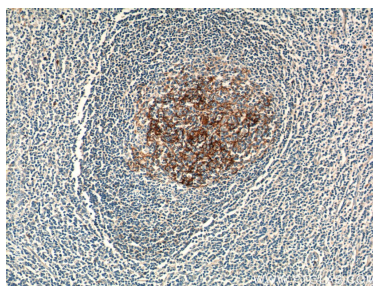
Storage:
Store at -20°C. Stable for one year after shipment.
Storage Buffer:
PBS with 0.02% sodium azide and 50% glycerol pH 7.3.
Aliquoting is unnecessary for -20°C storage

*** 20ul sizes contain 0.1% BSA

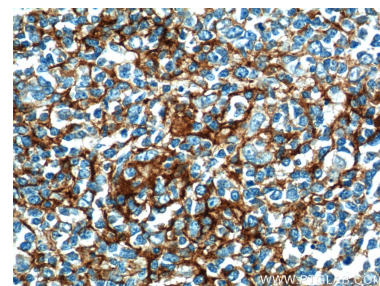
Selected Validation Data



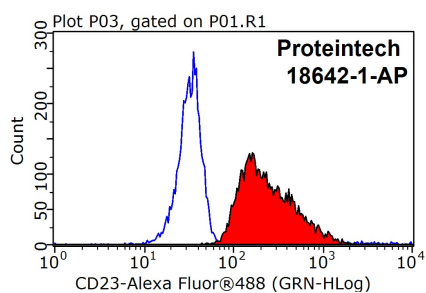
Raji cells were subjected to SDS PAGE followed by western blot with 18642-1-AP (FCER2,CD23 Antibody) at dilution of 1:600 incubated at room temperature for 1.5 hours.



Immunohistochemical analysis of paraffin-embedded human tonsillitis tissue slide using 18642-1-AP (FCER2,CD23 Antibody) at dilution of 1:50 (under 10x lens).



Immunohistochemical analysis of paraffin-embedded human tonsillitis tissue slide using 18642-1-AP (FCER2,CD23 Antibody) at dilution of 1:50 (under 40x lens).



1X10⁶ Raji cells were stained with 0.2ug FCER2,CD23 antibody (18642-1-AP, red) and control antibody (blue). Fixed with 90% MeOH blocked with 3% BSA (30 min). Alexa Fluor 488-conjugated AffiniPure Goat Anti-Rabbit IgG(H+L) with dilution 1:1000.