

For Research Use Only

LSS Polyclonal antibody

Catalog Number: 18693-1-AP

3 Publications



Basic Information

Catalog Number:

18693-1-AP

Size:

150ul, Concentration: 450 ug/ml by Nanodrop;

Source:

Rabbit

Isotype:

IgG

Immunogen Catalog Number:

AG6955

GenBank Accession Number:

BC035638

GeneID (NCBI):

4047

UNIPROT ID:

P48449

Full Name:

lanosterol synthase (2,3-oxidosqualene-lanosterol cyclase)

Calculated MW:

732 aa, 83 kDa

Observed MW:

70-75 kDa

Purification Method:

Antigen affinity purification

Recommended Dilutions:

WB 1:1000-1:4000

IP 0.5-4.0 ug for 1.0-3.0 mg of total protein lysate

IHC 1:50-1:500

IF/ICC 1:20-1:200

Applications

Tested Applications:

WB, IHC, IF/ICC, IP, ELISA

Cited Applications:

WB, IF

Species Specificity:

human, mouse, rat

Cited Species:

human, mouse

Note-IHC: suggested antigen retrieval with TE buffer pH 9.0; (*) Alternatively, antigen retrieval may be performed with citrate buffer pH 6.0

Positive Controls:

WB: HeLa cells,

IP: HeLa cells,

IHC: human liver cancer tissue,

IF/ICC: HepG2 cells,

Background Information

LSS, also named as OSC, is lanosterol synthase which catalyzes the cyclization of (S)-2,3 oxidosqualene to lanosterol, a reaction that forms the sterol nucleus. LSS gene has three isoforms with MW 74 kDa and 82-85 kDa. This antibody can recognize all these three isoforms.

Notable Publications

Author	Pubmed ID	Journal	Application
Xiao-Yi Lu	33177714	Nature	WB
Minglei Zhao	34926465	Front Cell Dev Biol	WB, IF
Mei-Yan Ma	39489939	Cell Rep	WB

Storage

Storage:

Store at -20°C. Stable for one year after shipment.

Storage Buffer:

PBS with 0.02% sodium azide and 50% glycerol pH 7.3.

Aliquoting is unnecessary for -20°C storage

*** 20ul sizes contain 0.1% BSA

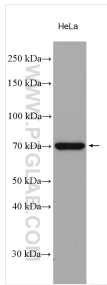
For technical support and original validation data for this product please contact:

T: 1 (888) 4PTGLAB (1-888-478-4522) (toll free in USA), or 1(312) 455-8498 (outside USA)

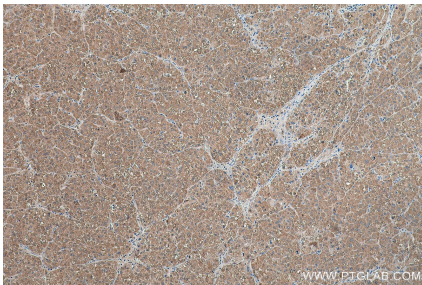
E: proteintech@ptglab.com
W: ptglab.com

This product is exclusively available under Proteintech Group brand and is not available to purchase from any other manufacturer.

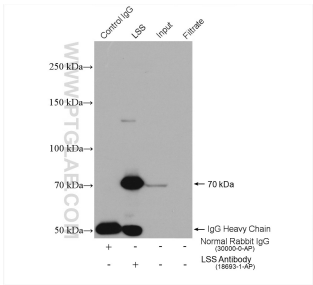
Selected Validation Data



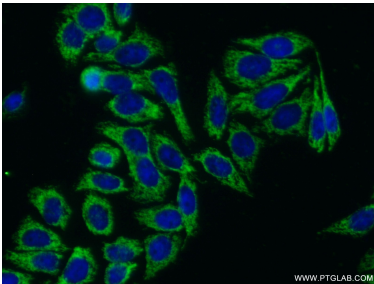
HeLa cells were subjected to SDS PAGE followed by western blot with 18693-1-AP (LSS antibody) at dilution of 1:2000 incubated at room temperature for 1.5 hours.



Immunohistochemical analysis of paraffin-embedded human liver cancer tissue slide using 18693-1-AP (LSS antibody) at dilution of 1:200 (under 10x lens). Heat mediated antigen retrieval with Tris-EDTA buffer (pH 9.0).



IP result of anti-LSS (IP:18693-1-AP, 4ug; Detection:18693-1-AP 1:500) with HeLa cells lysate 1880 ug.



Immunofluorescent analysis of (-20°C Ethanol) fixed HepG2 cells using 18693-1-AP (LSS antibody) at dilution of 1:50 and Alexa Fluor 488-conjugated Goat Anti-Rabbit IgG(H+L).