

For Research Use Only

MEF2B (isoform 365aa)-Specific Polyclonal antibody



Catalog Number: 18710-1-AP

Basic Information

| | | |
|--|---|--|
| Catalog Number: 18710-1-AP | GenBank Accession Number: NM_005919 | Purification Method: Antigen affinity purification |
| Size: 150ul , Concentration: 450 µg/ml by Nanodrop and 320 µg/ml by Bradford method using BSA as the standard; | GeneID (NCBI): 4207 | Recommended Dilutions: WB 1:500-1:1000 |
| Source: Rabbit | Full Name: LOC729991-MEF2B readthrough transcript | |
| Isotype: IgG | Calculated MW: 39 kDa | |
| | Observed MW: 38 kDa | |

Applications

| | |
|---|---|
| Tested Applications: WB, ELISA | Positive Controls: WB : mouse skeletal muscle tissue, |
| Species Specificity: human, mouse | |

Background Information

MEF2B is a member of the myocyte enhancer factor family of transcription factors. MEF family is thought to be involved in differentiation of certain neurogenic cells. MEF2B may be involved in muscle-specific and/or growth factor-related transcription.

This antibody detects the short isoform 365aa of MEF2B only.

Storage

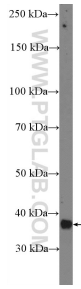
Storage:
Store at -20°C. Stable for one year after shipment.
Storage Buffer:
PBS with 0.02% sodium azide and 50% glycerol pH 7.3.
Aliquoting is unnecessary for -20°C storage

*** 20ul sizes contain 0.1% BSA

For technical support and original validation data for this product please contact:
T: 1 (888) 4PTGLAB (1-888-478-4522) (toll free in USA), or 1(312) 455-8498 (outside USA) E: proteintech@ptglab.com W: ptglab.com

This product is exclusively available under Proteintech Group brand and is not available to purchase from any other manufacturer.

Selected Validation Data



mouse skeletal muscle tissue were subjected to SDS PAGE followed by western blot with 18710-1-AP (MEF2B-Specific Antibody) at dilution of 1:600 incubated at room temperature for 1.5 hours.