

For Research Use Only

GABARAPL2-Specific Polyclonal antibody, PBS Only

Catalog Number: 18724-1-PBS

Featured Product



Basic Information

Catalog Number:

18724-1-PBS

Size:

100ug, Concentration: 1 mg/ml by Nanodrop;

Source:

Rabbit

Isotype:

IgG

GenBank Accession Number:

BC005985

GeneID (NCBI):

11345

UNIPROT ID:

P60520

Full Name:

GABA(A) receptor-associated protein-like 2

Calculated MW:

14 kDa

Observed MW:

14 kDa

Purification Method:

Antigen affinity purification

Applications

Tested Applications:

WB, IHC, IF/ICC, FC (Intra), Indirect ELISA

Species Specificity:

human, mouse, rat

Background Information

GABARAPL2 (also known as Golgi-associated ATPase enhancer of 16 kDa; GATE-16) was originally characterized as a factor essential for intra-Golgi protein transport. Later GABARAPL2 along with LC3 and GABARAP, were identified as the homologs of yeast ATG8 which is a unique ubiquitin-like protein essential for autophagy. When induced GABARAPL2 is first digested by ATG4 family enzymes to become its mature form: GABARAPL2-I, later conjugated to PE lipid as lipidated form: GABARAPL2-II. The lipidated form migrates faster than its mature form on SDS-PAGE gel. GABARAPL2 is strongly expressed in the brain. This antibody is specific to GABARAPL2. It has no cross-reaction to other GABARAP protein.

Storage

Storage:

Store at -80°C.

Storage Buffer:

PBS only, pH7.3

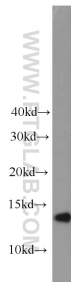
For technical support and original validation data for this product please contact:

T: 1 (888) 4PTGLAB (1-888-478-4522) (toll free in USA), or 1(312) 455-8498 (outside USA)

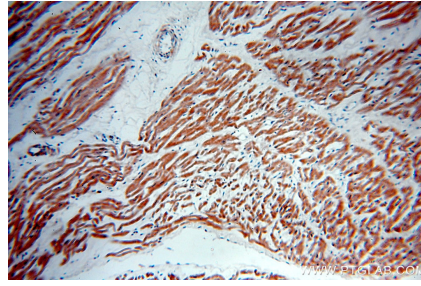
E: proteintech@ptglab.com
W: ptglab.com

This product is exclusively available under Proteintech Group brand and is not available to purchase from any other manufacturer.

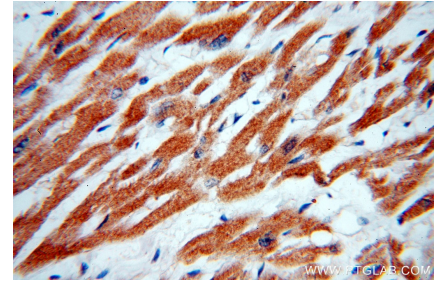
Selected Validation Data



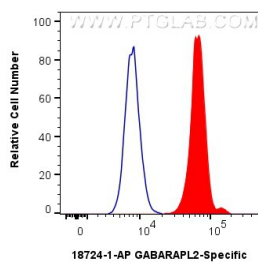
COLO 320 cells were subjected to SDS PAGE followed by western blot with 18724-1-AP (GABARAPL2-Specific antibody) at dilution of 1:800 incubated at room temperature for 1.5 hours. This data was developed using the same antibody clone with 18724-1-PBS in a different storage buffer formulation.



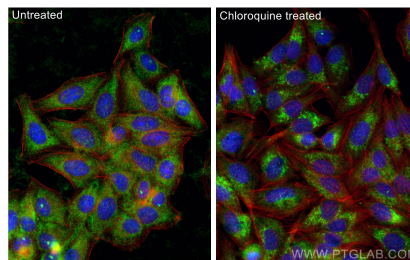
Immunohistochemical analysis of paraffin-embedded human heart using 18724-1-AP (GABARAPL2-Specific antibody) at dilution of 1:50 (under 10x lens). This data was developed using the same antibody clone with 18724-1-PBS in a different storage buffer formulation.



Immunohistochemical analysis of paraffin-embedded human heart using 18724-1-AP (GABARAPL2-Specific antibody) at dilution of 1:50 (under 40x lens). This data was developed using the same antibody clone with 18724-1-PBS in a different storage buffer formulation.



1×10^6 HepG2 cells were intracellularly stained with 0.25 ug GABARAPL2-Specific Polyclonal antibody (18724-1-AP) and CoralLite®488-Conjugated Goat Anti-Rabbit IgG(H+L) (SA00013-2) (red), or 0.25 ug Isotype Control (blue). Cells were fixed with 4% PFA and permeabilized with Flow Cytometry Perm Buffer (PF00011-C). This data was developed using the same antibody clone with 18724-1-PBS in a different storage buffer formulation.



Immunofluorescent analysis of (-20°C Ethanol) fixed Chloroquine treated HepG2 cells using GABARAPL2-Specific antibody (18724-1-AP) at dilution of 1:200 and CoralLite®488-Conjugated AffiniPure Goat Anti-Rabbit IgG(H+L) (SA00013-2), CL594-phalloidin (red). This data was developed using the same antibody clone with 18724-1-PBS in a different storage buffer formulation.