

For Research Use Only

LC3C-Specific Polyclonal antibody

Catalog Number: 18726-1-AP

6 Publications



Basic Information

Catalog Number:

18726-1-AP

Size:

150ul , Concentration: 550 ug/ml by Nanodrop;

Source:

Rabbit

Isotype:

IgG

GenBank Accession Number:

NM_001004343

GeneID (NCBI):

440738

UNIPROT ID:

Q9BXW4

Full Name:

microtubule-associated protein 1
light chain 3 gamma

Calculated MW:

17 kDa

Purification Method:

Antigen affinity purification

Recommended Dilutions:

WB 1:500-1:1000

IHC 1:50-1:500

Applications

Tested Applications:

WB, IHC, ELISA

Cited Applications:

WB, IF, IP

Species Specificity:

human

Cited Species:

human, mouse

Positive Controls:

WB : Recombinant protein,

IHC : human liver tissue,

Note-IHC: suggested antigen retrieval with TE buffer pH 9.0; (*) Alternatively, antigen retrieval may be performed with citrate buffer pH 6.0

Background Information

LC3C, also named as MAP1LC3C, belongs to the MAP1 LC3 family. It is the human homolog of yeast Atg8 and is involved in the formation of autophagosomal vacuoles, called autophagosomes. LC3C is produced by the proteolytic cleavage after the conserved C-terminal Gly residue. The antibody is specific to the prepeptide of LC3C.

Notable Publications

Author	Pubmed ID	Journal	Application
Dongheng Zhou	34776962	Front Pharmacol	WB,IP
Jonathan A Stefely	31971854	Autophagy	WB,IF
Debrup Sengupta	38353614	J Immunol	IF

Storage

Storage:

Store at -20°C. Stable for one year after shipment.

Storage Buffer:

PBS with 0.02% sodium azide and 50% glycerol pH 7.3.

Aliquoting is unnecessary for -20°C storage

*** 20ul sizes contain 0.1% BSA

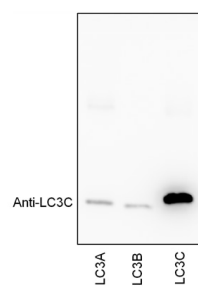
For technical support and original validation data for this product please contact:

T: 1 (888) 4PTGLAB (1-888-478-4522) (toll free in USA), or 1(312) 455-8498 (outside USA)

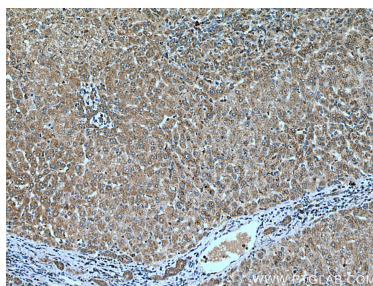
E: proteintech@ptglab.com
W: ptglab.com

This product is exclusively available under Proteintech Group brand and is not available to purchase from any other manufacturer.

Selected Validation Data



WB results of LC3C-specific antibody with Recombinant protein LC3A, LC3B and LC3C, by Dr. Christos Zois.



Immunohistochemical analysis of paraffin-embedded human liver tissue slide using 18726-1-AP (LC3C-Specific antibody) at dilution of 1:200 (under 10x lens). Heat mediated antigen retrieval with Tris-EDTA buffer (pH 9.0).