

For Research Use Only

DNA2 Polyclonal antibody

Catalog Number: 18727-1-AP

Featured Product

9 Publications



Basic Information

Catalog Number: 18727-1-AP	GenBank Accession Number: NM_001080449	Purification Method: Antigen affinity purification
Size: 150ul, Concentration: 550 µg/ml by Nanodrop and 287 µg/ml by Bradford method using BSA as the standard;	GeneID (NCBI): 1763	Recommended Dilutions: WB 1:500-1:1000 IP 0.5-4.0 ug for IP and 1:200-1:1000 for WB
Source: Rabbit	Full Name: DNA replication helicase 2 homolog (yeast)	IHC 1:50-1:500 IF 1:10-1:100
Isotype: IgG	Calculated MW: 120 kDa	
	Observed MW: 127 kDa	

Applications

Tested Applications: IF, IHC, IP, WB, ELISA	Positive Controls: WB : mouse liver tissue, mouse thymus tissue
Cited Applications: IF, IHC, WB	IP : mouse liver tissue,
Species Specificity: human, mouse	IHC : human cervical cancer tissue,
Cited Species: human, mouse	IF : HepG2 cells,

Note-IHC: suggested antigen retrieval with TE buffer pH 9.0; (*) Alternatively, antigen retrieval may be performed with citrate buffer pH 6.0

Background Information

DNA2 (DNA replication ATP-dependent helicase/nuclease DNA2) is also named as DNA2L, KIAA0083 and belongs to the DNA2/NAM7 helicase family. This protein includes 2 domains: DNA replication nuclease and DNA replication ATP-dependent helicase. It is a conserved helicase/nuclease involved in the maintenance of mitochondrial and nuclear DNA stability and it can interact with DNA polymerase gamma and stimulating its activity. It can also process intermediate 5' flap structures occurring in DNA replication long-patch base excision repair in mitochondria. It has 4 isoforms produced by alternative splicing. This antibody is specific to DNA2.

Notable Publications

Author	Pubmed ID	Journal	Application
Eric Hervouet	26474850	BMC Cancer	WB
Yongqu Lu	33134313	Front Mol Biosci	IHC
Ahmed Emam	35817959	Nat Cell Biol	WB, IF

Storage

Storage:
Store at -20°C. Stable for one year after shipment.

Storage Buffer:
PBS with 0.02% sodium azide and 50% glycerol pH 7.3.

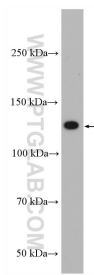
Aliquoting is unnecessary for -20°C storage

*** 20ul sizes contain 0.1% BSA

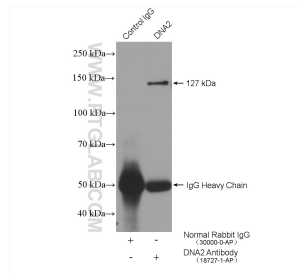
For technical support and original validation data for this product please contact:
T: 1 (888) 4PTGLAB (1-888-478-4522) (toll free in USA), or 1(312) 455-8498 (outside USA)
E: proteintech@ptglab.com
W: ptglab.com

This product is exclusively available under Proteintech Group brand and is not available to purchase from any other manufacturer.

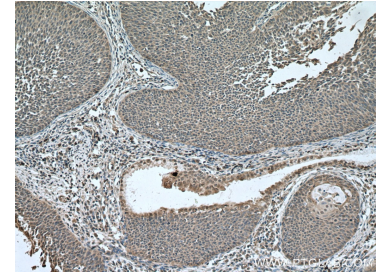
Selected Validation Data



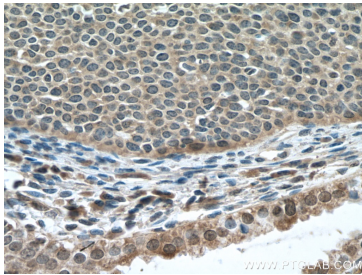
mouse liver tissue were subjected to SDS PAGE followed by western blot with 18727-1-AP (DNA2 antibody) at dilution of 1:600 incubated at room temperature for 1.5 hours.



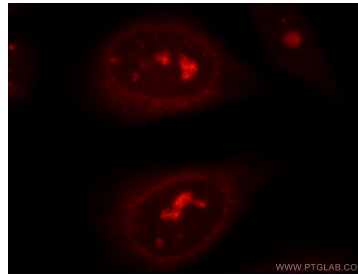
IP result of anti-DNA2 (IP:18727-1-AP, 4 μ g; Detection:18727-1-AP 1:300) with mouse liver tissue lysate 4800 μ g.



Immunohistochemical analysis of paraffin-embedded human cervical cancer tissue slide using 18727-1-AP (DNA2 antibody) at dilution of 1:200 (under 10 \times lens. Heat mediated antigen retrieval with Tris-EDTA buffer (pH 9.0).



Immunohistochemical analysis of paraffin-embedded human cervical cancer tissue slide using 18727-1-AP (DNA2 antibody) at dilution of 1:200 (under 40 \times lens. Heat mediated antigen retrieval with Tris-EDTA buffer (pH 9.0).



Immunofluorescent analysis of HepG2 cells using 18727-1-AP (DNA2 antibody) at dilution of 1:25 and Rhodamine-Goat anti-Rabbit IgG.