

For Research Use Only

# HOXD11 Polyclonal antibody

Catalog Number: 18734-1-AP

5 Publications



## Basic Information

Catalog Number:

18734-1-AP

Size:

150ul, Concentration: 450 ug/ml by Nanodrop;

Source:

Rabbit

Isotype:

IgG

GenBank Accession Number:

BC160135

GeneID (NCBI):

3237

UNIPROT ID:

P31277

Full Name:

homeobox D11

Calculated MW:

35 kDa

Observed MW:

32-36 kDa

Purification Method:

Antigen affinity purification

Recommended Dilutions:

WB 1:200-1:1000

## Applications

Tested Applications:

WB, ELISA

Cited Applications:

WB, IHC, IF

Species Specificity:

human, mouse, rat

Cited Species:

human, mouse

Positive Controls:

WB : SMMC-7721 cells,

## Background Information

HOXD11, also named as HOX4F, belongs to the Abd-B homeobox family. HOXD11 is a sequence-specific transcription factor which is part of a developmental regulatory system that provides cells with specific positional identities on the anterior-posterior axis. HOXD11 plays a role in forelimb morphogenesis.

## Notable Publications

Author	Pubmed ID	Journal	Application
Karim Fekir	30837223	Cancer Res	IHC
Jian Hui Low	31303547	Cell Stem Cell	IF
Quan Hong	38308324	J Orthop Surg Res	WB,IHC

## Storage

Storage:

Store at -20°C. Stable for one year after shipment.

Storage Buffer:

PBS with 0.02% sodium azide and 50% glycerol pH 7.3.

Aliquoting is unnecessary for -20°C storage

\*\*\* 20ul sizes contain 0.1% BSA

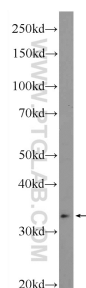
For technical support and original validation data for this product please contact:

T: 1 (888) 4PTGLAB (1-888-478-4522) (toll free in USA), or 1(312) 455-8498 (outside USA)

E: [proteintech@ptglab.com](mailto:proteintech@ptglab.com)  
W: [ptglab.com](http://ptglab.com)

This product is exclusively available under Proteintech Group brand and is not available to purchase from any other manufacturer.

## Selected Validation Data



SMMC-7721 cells were subjected to SDS PAGE followed by western blot with 18734-1-AP (HOXD11 Antibody) at dilution of 1:300 incubated at room temperature for 1.5 hours.