

For Research Use Only

NIPBL Polyclonal antibody

Catalog Number: 18792-1-AP **3 Publications**



Basic Information

Catalog Number: 18792-1-AP	GenBank Accession Number: BC033847	Purification Method: Antigen affinity purification
Size: 150ul , Concentration: 350 µg/ml by Nanodrop and 173 µg/ml by Bradford method using BSA as the standard;	GeneID (NCBI): 25836	Recommended Dilutions: WB 1:500-1:2000 IF 1:50-1:500
Source: Rabbit	Full Name: Nipped-B homolog (Drosophila)	
Isotype: IgG	Calculated MW: 2804 aa, 316 kDa	
Immunogen Catalog Number: AG5663	Observed MW: 300 kDa	

Applications

Tested Applications: IF, WB, ELISA	Positive Controls: WB : HeLa cells, IF : HeLa cells,
Cited Applications: ChIP, WB	
Species Specificity: human, mouse, rat	
Cited Species: human, mouse	

Background Information

NIPBL, also named as Nipped-B-like protein, is a 28-4 amino acid protein, which contains one Pro-Xaa-Val-Xaa-Leu (PxVxL) motif, which is required for interaction with chromoshadow domains and belongs to the SCC2/Nipped-B family. NIPBL probably plays a structural role in chromatin and involves in sister chromatid cohesion, possibly by interacting with the cohesin complex. endogenous full length NIPBL which is estimated to be about 300kDa led us to believe that the NIPBL protein was deteriorated or lost by the standard protein extraction and blotting techniques.

Notable Publications

Author	Pubmed ID	Journal	Application
Dan Liu	29712898	Nat Commun	WB
Yeguang Hu	37995656	Cell	ChIP
Malay Mandal	37985858	Nat Immunol	ChIP

Storage

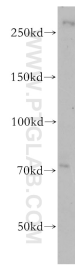
Storage:
Store at -20°C. Stable for one year after shipment.
Storage Buffer:
PBS with 0.02% sodium azide and 50% glycerol pH 7.3.
Aliquoting is unnecessary for -20°C storage

*** 20ul sizes contain 0.1% BSA

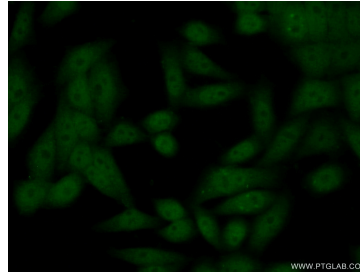
For technical support and original validation data for this product please contact:
T: 1 (888) 4PTGLAB (1-888-478-4522) (toll free in USA), or 1(312) 455-8498 (outside USA)
E: proteintech@ptglab.com
W: ptglab.com

This product is exclusively available under Proteintech Group brand and is not available to purchase from any other manufacturer.

Selected Validation Data



HeLa cells were subjected to SDS PAGE followed by western blot with 18792-1-AP (NIPBL antibody) at dilution of 1:800 incubated at room temperature for 1.5 hours.



Immunofluorescent analysis of (10% Formaldehyde) fixed HeLa cells using 18792-1-AP (NIPBL antibody) at dilution of 1:50 and Alexa Fluor 488-conjugated AffiniPure Goat Anti-Rabbit IgG(H+L).