

For Research Use Only

PSME4 Polyclonal antibody

Catalog Number: 18799-1-AP

Featured Product

3 Publications



Basic Information

Catalog Number:

18799-1-AP

Size:

150ul, Concentration: 700 ug/ml by Nanodrop and 450 ug/ml by Bradford method using BSA as the standard;

Source:

Rabbit

Isotype:

IgG

GenBank Accession Number:

BC113668

GeneID (NCBI):

23198

UNIPROT ID:

Q14997

Full Name:

proteasome (prosome, macropain) activator subunit 4

Calculated MW:

211 kDa

Observed MW:

140 kDa

Purification Method:

Antigen affinity purification

Recommended Dilutions:

WB 1:500-1:2000

IP 0.5-4.0 ug for 1.0-3.0 mg of total protein lysate

IHC 1:50-1:500

IF/ICC 1:10-1:100

Applications

Tested Applications:

WB, IHC, IF/ICC, IP, ELISA

Cited Applications:

WB, IHC, ColP

Species Specificity:

human, mouse, rat

Cited Species:

human

Positive Controls:

WB : HEK-293 cells, HepG2 cells

IP : HEK-293 cells,

IHC : human liver cancer tissue,

IF/ICC : HepG2 cells, Hela cells

Note-IHC: suggested antigen retrieval with TE buffer pH 9.0; (*) Alternatively, antigen retrieval may be performed with citrate buffer pH 6.0

Background Information

PSME4, like PSME1, 2, and 3, encodes proteasome activator complex subunit 4 also named proteasome activator 200 kDa (PA200). PA200 activates proteasomal cleavage of peptides in an energy-independent manner. After exposure of cells to ionizing radiation, PA200 forms nuclear foci and enhances proteasome activity independent of the stage of cell cycle arrest. PA200 also may be involved in spermatogenesis. The antibody is expected to recognize all the 4 isoforms of PSME4 but appears to mainly detect isoform 2 of 140-kDa.

Notable Publications

Author	Pubmed ID	Journal	Application
Zhen Yu	35344764	EBioMedicine	IHC
Sijia Ge	35115815	Int J Gen Med	WB
Peixia Tang	38199044	EBioMedicine	WB, ColP

Storage

Storage:

Store at -20°C. Stable for one year after shipment.

Storage Buffer:

PBS with 0.02% sodium azide and 50% glycerol pH 7.3.

Aliquoting is unnecessary for -20°C storage

*** 20ul sizes contain 0.1% BSA

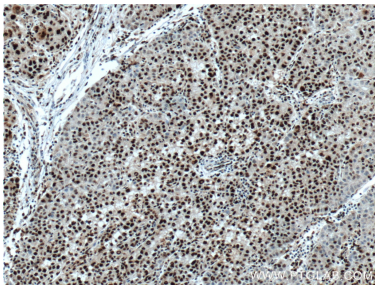
For technical support and original validation data for this product please contact:

T: 1 (888) 4PTGLAB (1-888-478-4522) (toll free in USA), or 1(312) 455-8498 (outside USA)

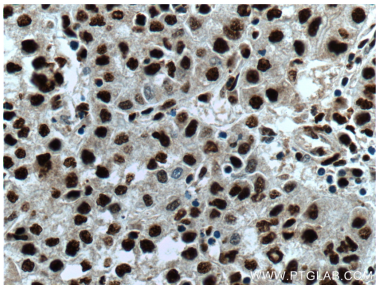
E: proteintech@ptglab.com
W: ptglab.com

This product is exclusively available under Proteintech Group brand and is not available to purchase from any other manufacturer.

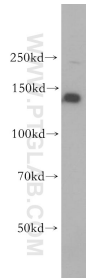
Selected Validation Data



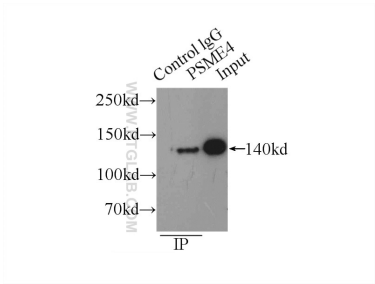
Immunohistochemical analysis of paraffin-embedded human liver cancer tissue slide using 18799-1-AP (PSME4 antibody) at dilution of 1:200 (under 10x lens. Heat mediated antigen retrieval with Tris-EDTA buffer (pH 9.0).



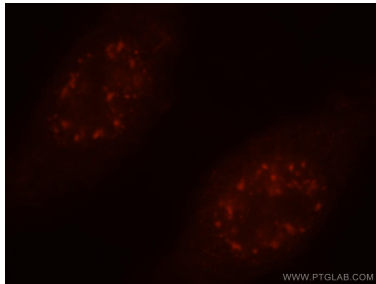
Immunohistochemical analysis of paraffin-embedded human liver cancer tissue slide using 18799-1-AP (PSME4 antibody) at dilution of 1:200 (under 40x lens. Heat mediated antigen retrieval with Tris-EDTA buffer (pH 9.0).



HEK-293 cells were subjected to SDS PAGE followed by western blot with 18799-1-AP (PSME4 antibody) at dilution of 1:400 incubated at room temperature for 1.5 hours.



IP result of anti-PSME4 (IP:18799-1-AP, 3ug; Detection:18799-1-AP 1:500) with HEK-293 cells lysate 1760ug.



Immunofluorescent analysis of HepG2 cells, using PSME4 antibody 18799-1-AP at 1:25 dilution and Rhodamine-labeled goat anti-rabbit IgG (red).