

For Research Use Only

PPP1R9A Polyclonal antibody

Catalog Number: 18801-1-AP



Basic Information

Catalog Number:

18801-1-AP

Size:

150ul , Concentration: 260 ug/ml by Nanodrop and 140 ug/ml by Bradford method using BSA as the standard;

Source:

Rabbit

Isotype:

IgG

GenBank Accession Number:

BC150636

GeneID (NCBI):

55607

UNIPROT ID:

Q9ULJ8

Full Name:

protein phosphatase 1, regulatory (inhibitor) subunit 9A

Calculated MW:

123 kDa

Observed MW:

180 kDa

Purification Method:

Antigen affinity purification

Recommended Dilutions:

WB 1:500-1:1000

IF/ICC 1:10-1:100

Applications

Tested Applications:

WB, IF/ICC, ELISA

Species Specificity:

human, mouse, rat

Positive Controls:

WB : PC-3 cells,

IF/ICC : HepG2 cells, HeLa cells

Background Information

PPP1R9A, also named as KIAA1222 and NEB1, binds to actin filaments (F-actin) and shows cross-linking activity. PPP1R9A has been found to be concentrated in the synapse of developed neurons and in the lamellipodia of the growth cone during neuron development. PPP1R9A may be involved in neurite formation. PPP1R9A inhibits protein phosphatase 1-alpha activity.

Storage

Storage:

Store at -20°C. Stable for one year after shipment.

Storage Buffer:

PBS with 0.02% sodium azide and 50% glycerol pH 7.3.

Aliquoting is unnecessary for -20°C storage

*** 20ul sizes contain 0.1% BSA

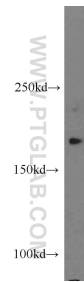
For technical support and original validation data for this product please contact:

T: 1 (888) 4PTGLAB (1-888-478-4522) (toll free in USA), or 1(312) 455-8498 (outside USA)

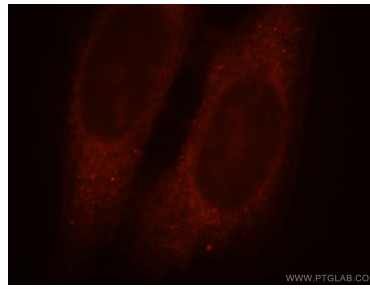
E: proteintech@ptglab.com
W: ptglab.com

This product is exclusively available under Proteintech Group brand and is not available to purchase from any other manufacturer.

Selected Validation Data



PC-3 cells were subjected to SDS PAGE followed by western blot with 18801-1-AP (PPP1R9A antibody) at dilution of 1:300 incubated at room temperature for 1.5 hours.



Immunofluorescent analysis of HepG2 cells, using PPP1R9A antibody 18801-1-AP at 1:25 dilution and Rhodamine-labeled goat anti-rabbit IgG (red).