

For Research Use Only

INTS8 Polyclonal antibody

Catalog Number: 18802-1-AP **4 Publications**



Basic Information

Catalog Number: 18802-1-AP	GenBank Accession Number: BC136754	Purification Method: Antigen affinity purification
Size: 150ul , Concentration: 400 µg/ml by Nanodrop and 240 µg/ml by Bradford method using BSA as the standard;	GeneID (NCBI): 55656	Recommended Dilutions: WB 1:200-1:1000 IP 0.5-4.0 ug for IP and 1:500-1:1000 for WB
Source: Rabbit	Full Name: integrator complex subunit 8	IF 1:10-1:100
Isotype: IgG	Calculated MW: 111 kDa	
	Observed MW: 90-115 kDa	

Applications

Tested Applications: IF, IP, WB, ELISA	Positive Controls: WB : MCF7 cells, HeLa cells
Cited Applications: IHC, WB	IP : HeLa cells,
Species Specificity: human	IF : HeLa cells,
Cited Species: human, mouse	

Background Information

INTS8, also named as C8orf52, is a Component of the Integrator complex which is a complex involved in the small nuclear RNAs (snRNA) U1 and U2 transcription and in their 3'-box-dependent processing. INTS8 is associated with the C-terminal domain (CTD) of RNA polymerase II largest subunit (POLR2A) and is recruited to the U1 and U2 snRNAs genes.

Notable Publications

Author	Pubmed ID	Journal	Application
Hai Zheng	33243860	Science	WB
Hui Tong	30881114	Cancer Manag Res	IHC
Fuqiang Yin	27567667	J Exp Clin Cancer Res	WB

Storage

Storage:
Store at -20°C. Stable for one year after shipment.
Storage Buffer:
PBS with 0.02% sodium azide and 50% glycerol pH 7.3.
Aliquoting is unnecessary for -20°C storage

*** 20ul sizes contain 0.1% BSA

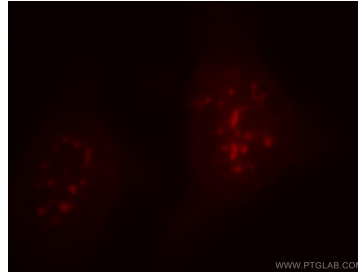
For technical support and original validation data for this product please contact:
T: 1 (888) 4PTGLAB (1-888-478-4522) (toll free in USA), or 1(312) 455-8498 (outside USA) E: proteintech@ptglab.com W: ptglab.com

This product is exclusively available under Proteintech Group brand and is not available to purchase from any other manufacturer.

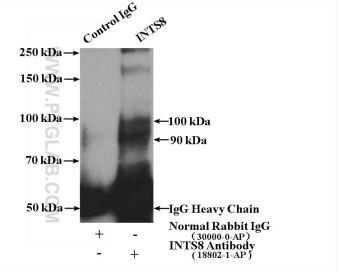
Selected Validation Data



MCF7 cells were subjected to SDS PAGE followed by western blot with 18802-1-AP (INTS8 antibody) at dilution of 1:300 incubated at room temperature for 1.5 hours.



Immunofluorescent analysis of HeLa cells, using INTS8 antibody 18802-1-AP at 1:25 dilution and Rhodamine-labeled goat anti-rabbit IgG (red).



IP Result of anti-INTS8 (IP:18802-1-AP, 4 μ g; Detection:18802-1-AP 1:500) with HeLa cells lysate 4000 μ g.