

For Research Use Only

INTS8 Polyclonal antibody, PBS Only

Catalog Number: 18802-1-PBS



Basic Information

Catalog Number: 18802-1-PBS	GenBank Accession Number: BC136754	Purification Method: Antigen affinity purification
Size: 100ug , Concentration: 1 mg/ml by Nanodrop;	GeneID (NCBI): 55656	
Source: Rabbit	UNIPROT ID: Q75QN2	
Isotype: IgG	Full Name: integrator complex subunit 8	
	Calculated MW: 111 kDa	
	Observed MW: 95-111 kDa	

Applications

Tested Applications:
WB, IF/ICC, IP, Indirect ELISA

Species Specificity:
human

Background Information

Integrator complex subunit 8 (INTS8) is one of the major components of RNA polymerase II and has been demonstrated to be involved in the cleavage of small nuclear RNAs and transcriptional processes (PMID: 34880328). INTS8 was robustly increased in neurodevelopmental diseases and numerous tumors. High INTS8 expression has a tight correlation with poor prognosis in multi-cancers (PMID: 30881114). Western blot analysis detected INTS8 at an apparent molecular mass of 111 kDa.

Storage

Storage:
Store at -80°C.

Storage Buffer:
PBS Only

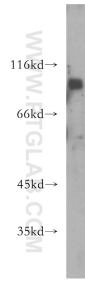
For technical support and original validation data for this product please contact:

T: 1 (888) 4PTGLAB (1-888-478-4522) (toll free in USA), or 1(312) 455-8498 (outside USA)

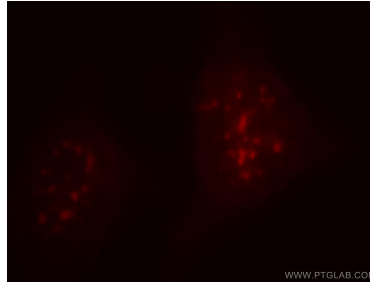
E: proteintech@ptglab.com
W: ptglab.com

This product is exclusively available under Proteintech Group brand and is not available to purchase from any other manufacturer.

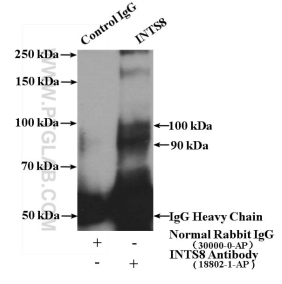
Selected Validation Data



MCF7 cells were subjected to SDS PAGE followed by western blot with 18802-1-AP (INTS8 antibody) at dilution of 1:300 incubated at room temperature for 1.5 hours. This data was developed using the same antibody clone with 18802-1-PBS in a different storage buffer formulation.



Immunofluorescent analysis of HeLa cells, using INTS8 antibody 18802-1-AP at 1:25 dilution and Rhodamine-labeled goat anti-rabbit IgG (red). This data was developed using the same antibody clone with 18802-1-PBS in a different storage buffer formulation.



IP result of anti-INTS8 (IP:18802-1-AP, 4ug; Detection:18802-1-AP 1:500) with HeLa cells lysate 4000ug. This data was developed using the same antibody clone with 18802-1-PBS in a different storage buffer formulation.