

For Research Use Only

MEPE Polyclonal antibody

Catalog Number: 18804-1-AP

Featured Product



Basic Information

| | | |
|--|---|--|
| Catalog Number: 18804-1-AP | GenBank Accession Number: BC128158 | Purification Method: Antigen affinity purification |
| Size: 150ul , Concentration: 700 µg/ml by Nanodrop and 307 µg/ml by Bradford method using BSA as the standard; | GeneID (NCBI): 56955 | Recommended Dilutions: WB 1:1000-1:4000 |
| Source: Rabbit | Full Name: matrix extracellular phosphoglycoprotein | |
| Isotype: IgG | Calculated MW: 525 aa, 58 kDa | |
| | Observed MW: 43 kDa, 98 kDa | |

Applications

| | |
|--|---|
| Tested Applications: WB, ELISA | Positive Controls: WB : HepG2 cells, A2780 cells, A375 cells, HeLa cells, MCF-7 cells |
| Species Specificity: human | |

Background Information

Matrix extracellular phosphoglycoprotein (MEPE), also known as osteoblast/osteocyte factor 45 (OF45), is a member of the small integrin-binding ligand N-linked glycoprotein (SIBLING) family (PMID: 12952171). MEPE promotes renal phosphate excretion and modulates mineralization (PMID: 22582013). It can be phosphorylated by secreted protein kinases (PMID: 14962809). MEPE is expressed in osteoblasts, osteocytes and odontoblasts, and the expression has also been reported in numerous human tumor cell lines (PMID: 14962809; 20145617). It is a 525-amino acid protein with a calculated molecular weight of 58 kDa. This antibody raised against a synthetic peptide (CTHGRKYHYVPHRQNNSTR) detects a major band (43 kDa) and two minor bands (98 kDa and 34 kDa).

Storage

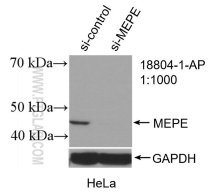
Storage:
Store at -20°C. Stable for one year after shipment.
Storage Buffer:
PBS with 0.02% sodium azide and 50% glycerol pH 7.3.
Aliquoting is unnecessary for -20°C storage

*** 20ul sizes contain 0.1% BSA

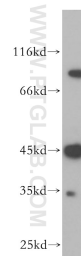
For technical support and original validation data for this product please contact:
T: 1 (888) 4PTGLAB (1-888-478-4522) (toll free in USA), or 1(312) 455-8498 (outside USA) E: proteintech@ptglab.com W: ptglab.com

This product is exclusively available under Proteintech Group brand and is not available to purchase from any other manufacturer.

Selected Validation Data



WB result of MEPE antibody (18804-1-AP; 1:1000; incubated at room temperature for 1.5 hours) with sh-Control and sh-MEPE transfected HeLa cells.



HepG2 cells were subjected to SDS PAGE followed by western blot with 18804-1-AP (MEPE antibody) at dilution of 1:600 incubated at room temperature for 1.5 hours.