

For Research Use Only

GPR142 Polyclonal antibody

Catalog Number: 18820-1-AP

1 Publications



Basic Information

Catalog Number:

18820-1-AP

Size:

150ul , Concentration: 207 ug/ml by Bradford method using BSA as the standard;

Source:

Rabbit

Isotype:

IgG

GenBank Accession Number:

BC152987

GeneID (NCBI):

350383

UNIPROT ID:

Q7Z601

Full Name:

G protein-coupled receptor 142

Calculated MW:

462 aa, 51 kDa

Observed MW:

51-55 kDa

Purification Method:

Antigen affinity purification

Recommended Dilutions:

WB 1:500-1:1000

Applications

Tested Applications:

WB, ELISA

Cited Applications:

WB

Species Specificity:

human

Positive Controls:

WB : SH-SY5Y cells,

Background Information

GPR142, also named as PGR2, belongs to the G-protein coupled receptor 1 family. It is an orphan receptor. This antibody recognizes the 51-kDa GRP142.

Notable Publications

Author	Pubmed ID	Journal	Application
Bingru Zhao	35255833	BMC Genomics	WB

Storage

Storage:

Store at -20°C. Stable for one year after shipment.

Storage Buffer:

PBS with 0.02% sodium azide and 50% glycerol pH 7.3.

Aliquoting is unnecessary for -20°C storage

*** 20ul sizes contain 0.1% BSA

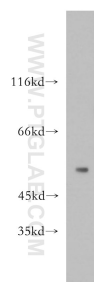
For technical support and original validation data for this product please contact:

T: 1 (888) 4PTGLAB (1-888-478-4522) (toll free in USA), or 1(312) 455-8498 (outside USA)

E: proteintech@ptglab.com
W: ptglab.com

This product is exclusively available under Proteintech Group brand and is not available to purchase from any other manufacturer.

Selected Validation Data



SH-SY5Y cells were subjected to SDS PAGE followed by western blot with 18820-1-AP (GPR142 antibody) at dilution of 1:300 incubated at room temperature for 1.5 hours.