

For Research Use Only

LILRA5/CD85f Polyclonal antibody, PBS Only

Catalog Number: 18821-1-PBS



Basic Information

Catalog Number: 18821-1-PBS	GenBank Accession Number: BC153203	Purification Method: Antigen affinity purification
Size: 100ug, Concentration: 1 mg/ml by Nanodrop;	GeneID (NCBI): 353514	
Source: Rabbit	UNIPROT ID: A6NI73	
IsoType: IgG	Full Name: leukocyte immunoglobulin-like receptor, subfamily A (with TM domain), member 5	
	Calculated MW: 299 aa, 33 kDa	
	Observed MW: 31-33 kDa	

Applications

Tested Applications:
WB, Indirect ELISA

Species Specificity:
human

Background Information

LILRA5, also named as CD85f, ILT11, LILRB7 or LIR9, is a member of the leukocyte immunoglobulin-like receptor (LIR) family, which is a group of immune inhibitory and stimulatory receptors (PMID: 15304001). There are two membrane-bound and two soluble forms of LILRA5. The transmembrane LILRA5 contains a short cytoplasmic domain and a charged arginine residue within the transmembrane region (PMID: 19009525). It is mostly expressed in myeloid cells, including monocytes and neutrophils (PMID: 12393390). LILRA5 may play a role in triggering innate immune responses. It does not function in class I MHC antigens recognition (PMID: 16675463). The antibody recognizes the isoform 1 and isoform 2 of LILRA5.

Storage

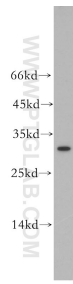
Storage:
Store at -80°C.

Storage Buffer:
PBS only, pH7.3

For technical support and original validation data for this product please contact:
T: 1 (888) 4PTGLAB (1-888-478-4522) (toll free in USA), or 1(312) 455-8498 (outside USA) E: proteintech@ptglab.com
W: ptglab.com

This product is exclusively available under Proteintech Group brand and is not available to purchase from any other manufacturer.

Selected Validation Data



K-562 cells were subjected to SDS PAGE followed by western blot with 18821-1-AP (LILRA5 antibody) at dilution of 1:500 incubated at room temperature for 1.5 hours. This data was developed using the same antibody clone with 18821-1-PBS in a different storage buffer formulation.