

For Research Use Only

# RBP2 Polyclonal antibody, PBS Only

Catalog Number: 18825-1-PBS

Featured Product



## Basic Information

### Catalog Number:

18825-1-PBS

### Size:

100ug, Concentration: 1 mg/ml by Nanodrop;

### Source:

Rabbit

### Isotype:

IgG

### GenBank Accession Number:

NM\_005056

### GeneID (NCBI):

5927

### UNIPROT ID:

P29375

### Full Name:

lysine (K)-specific demethylase 5A

### Calculated MW:

192 kDa

### Observed MW:

192 kDa

### Purification Method:

Antigen affinity purification

## Applications

### Tested Applications:

WB, IF/ICC, IF-P, IP, Indirect ELISA

### Species Specificity:

human, mouse, rat

## Background Information

KDM5A, also named as JARID1A, RBBP2 and RBP2, belongs to the JARID1 histone demethylase family. KDM5A is a Histone demethylase that specifically demethylates 'Lys-4' of histone H3, thereby playing a central role in histone code. Does not demethylate histone H3 'Lys-9', H3 'Lys-27', H3 'Lys-36', H3 'Lys-79' or H4 'Lys-20'. RBP2 may stimulate transcription mediated by nuclear receptors. It may be involved in transcriptional regulation of Hox proteins during cell differentiation. It may participate in transcriptional repression of cytokines such as CXCL12.

## Storage

### Storage:

Store at -80°C.

### Storage Buffer:

PBS only

For technical support and original validation data for this product please contact:

T: 1 (888) 4PTGLAB (1-888-478-4522) (toll free in USA), or 1(312) 455-8498 (outside USA)

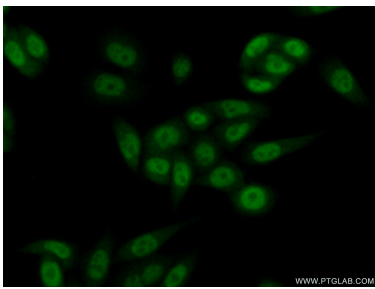
E: [proteintech@ptglab.com](mailto:proteintech@ptglab.com)  
W: [ptglab.com](http://ptglab.com)

This product is exclusively available under Proteintech Group brand and is not available to purchase from any other manufacturer.

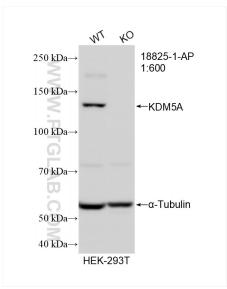
Selected Validation Data



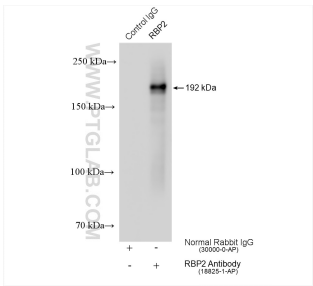
HeLa cells were subjected to SDS PAGE followed by western blot with 18825-1-AP (RBP2 antibody) at dilution of 1:500 incubated at room temperature for 1.5 hours. This data was developed using the same antibody clone with 18825-1-PBS in a different storage buffer formulation.



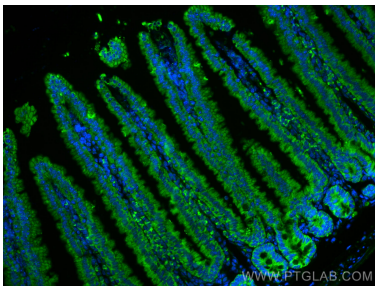
Immunofluorescent analysis of (10% Formaldehyde) fixed HeLa cells using 18825-1-AP (RBP2 antibody) at dilution of 1:50 and Alexa Fluor 488-conjugated AffiniPure Goat Anti-Rabbit IgG(H+L). This data was developed using the same antibody clone with 18825-1-PBS in a different storage buffer formulation.



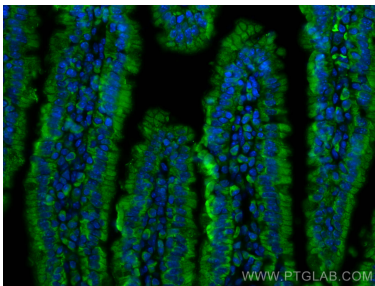
WB result of KDM5A antibody (18825-1-AP; 1:600; room temperature for 1.5 hours) with wild-type and KDM5A knockout HEK-293T cells. This data was developed using the same antibody clone with 18825-1-PBS in a different storage buffer formulation.



IP result of anti-RBP2 (IP:18825-1-AP, 4ug; Detection:18825-1-AP 1:500) with HeLa cells lysate 1280 ug. This data was developed using the same antibody clone with 18825-1-PBS in a different storage buffer formulation.



Immunofluorescent analysis of (4% PFA) fixed paraffin-embedded mouse small intestine tissue using RBP2 antibody (18825-1-AP) at dilution of 1:200 and CoraLite®488-Conjugated AffiniPure Goat Anti-Rabbit IgG(H+L) (SA00013-2). Heat mediated antigen retrieval with Tris-EDTA buffer (pH 9.0). This data was developed using the same antibody clone with 18825-1-PBS in a different storage buffer formulation.



Immunofluorescent analysis of (4% PFA) fixed paraffin-embedded mouse small intestine tissue using RBP2 antibody (18825-1-AP) at dilution of 1:200 and CoraLite®488-Conjugated AffiniPure Goat Anti-Rabbit IgG(H+L) (SA00013-2). Heat mediated antigen retrieval with Tris-EDTA buffer (pH 9.0). This data was developed using the same antibody clone with 18825-1-PBS in a different storage buffer formulation.