

For Research Use Only

GPR68 Polyclonal antibody

Catalog Number: 18826-1-AP



Basic Information

Catalog Number:

18826-1-AP

Size:

150ul , Concentration: 450 ug/ml by Nanodrop;

Source:

Rabbit

Isotype:

IgG

GenBank Accession Number:

BC098567

GeneID (NCBI):

8111

UNIPROT ID:

Q15743

Full Name:

G protein-coupled receptor 68

Calculated MW:

41 kDa

Observed MW:

50 kDa

Purification Method:

Antigen affinity purification

Recommended Dilutions:

WB 1:1000-1:6000

Applications

Tested Applications:

WB, ELISA

Species Specificity:

human, mouse, rat

Positive Controls:

WB : mouse brain tissue, mouse lung tissue, rat brain tissue, rat lung tissue

Background Information

GPR68, also named as OGR1, belongs to the G-protein coupled receptor 1 family. GPR68 binds sphingosylphosphorylcholine, GPR68 is a lipid molecule involved in cell growth and survival and has been shown to act as a proton-sensing receptor stimulating inositol phosphate formation.

Storage

Storage:

Store at -20°C. Stable for one year after shipment.

Storage Buffer:

PBS with 0.02% sodium azide and 50% glycerol pH 7.3.

Aliquoting is unnecessary for -20°C storage

*** 20ul sizes contain 0.1% BSA

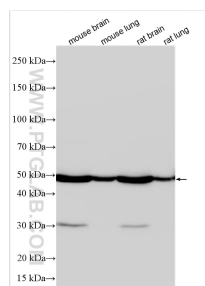
For technical support and original validation data for this product please contact:

T: 1 (888) 4PTGLAB (1-888-478-4522) (toll free in USA), or 1(312) 455-8498 (outside USA)

E: proteintech@ptglab.com
W: ptglab.com

This product is exclusively available under Proteintech Group brand and is not available to purchase from any other manufacturer.

Selected Validation Data



Various lysates were subjected to SDS PAGE followed by western blot with 18826-1-AP (GPR68 antibody) at dilution of 1:3000 incubated at room temperature for 1.5 hours.